

Human GPR37 (His Tag) recombinant protein



Catalog Number: 500240

General Information

Gene Name Synonym

Endothelin B receptor-like protein 1; G-protein coupled receptor 37; Parkin-associated endothelin receptor-like receptor

Protein Construction

A DNA sequence encoding the human GPR37 (NP_005293.1) the first extracellular domain (Met 1-Met 265) was fused with a polyhistidine tag at the C-terminus.

Organism

Human

Expression Host

Human Cells

QC Testing

Purity

> 80 % as determined by SDS-PAGE

Endotoxin

< 1.0 EU per μg of the protein as determined by the LAL method

Stability

Samples are stable for up to twelve months from date of receipt at -70°C

Predicted N terminal

Ala 27

Molecular Mass

The secreted recombinant human GPR37 comprises 250 amino acids and has a predicted molecular mass of 26.6 kDa. The apparent molecular mass of rh GPR37 is approximately 30-45 kDa in SDS-PAGE under reducing conditions due to different glycosylation.

Formulation

Lyophilized from sterile PBS, pH 7.4

1. 5 % trehalose and mannitol are added as protectants before lyophilization.

2. Please contact us for any concerns or special requirements.

Usage Guide

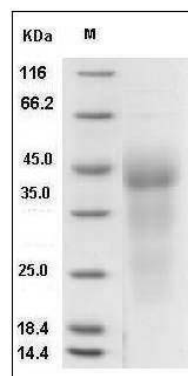
Storage

Store it under sterile conditions at -20°C to -80°C . It is recommended that the protein be aliquoted for optimal storage. Avoid repeated freeze-thaw cycles.

Reconstitution

Adding sterile water, prepare a stock solution of 0.25 mg/ml. Concentration is measured by UV-Vis.

SDS-PAGE



Human GPR37 Protein (His Tag) SDS-PAGE