

Human MAG/GMA/Siglec-4 (His Tag) recombinant protein



Catalog Number: 502940

General Information

Gene Name Synonym

Siglec-4a

Protein Construction

A DNA sequence encoding the human MAG extracellular domain (P20916) (Met 1-Pro 516) was fused with a polyhistidine tag at the C-terminus.

Organism

Human

Expression Host

Human Cells

QC Testing

Activity

1. Measured by its ability to bind mouse RTN4R-Fc2h (Cat:500415) in functional Elisa.
2. Measured by its ability to bind human RTN4R-Fch (Cat:503259) in functional Elisa.

Purity

> 95 % as determined by SDS-PAGE

Endotoxin

< 1.0 EU per μg of the protein as determined by the LAL method

Stability

Samples are stable for up to twelve months from date of receipt at -70°C

Predicted N terminal

Gly 20

Molecular Mass

The secreted recombinant human MAG comprises 508 amino acids and has a predicted molecular mass of 56 kDa. The apparent molecular mass of rhMAG is approximately 85 kDa in SDS-PAGE under reducing conditions due to glycosylation.

Formulation

Lyophilized from sterile PBS, pH 7.4

1. 5 % trehalose and mannitol are added as protectants before lyophilization.

2. Please contact us for any concerns or special requirements.

Usage Guide

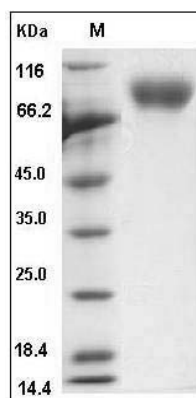
Storage

Store it under sterile conditions at -20°C to -80°C . It is recommended that the protein be aliquoted for optimal storage. Avoid repeated freeze-thaw cycles.

Reconstitution

Adding sterile water, prepare a stock solution of 0.25 mg/ml. Concentration is measured by UV-Vis.

SDS-PAGE



Human MAG / GMA / Siglec-4 Protein (His Tag)
SDS-PAGE