

# BTF3L3-Specific antibody

Catalog Number: 108540

## Product name

BTF3L3-Specific antibody

## Specificity

Human; other species not tested.

## Antibody description

BTF3L3-Specific Rabbit Polyclonal antibody.  
Positive WB detected in human brain tissue.  
Positive IHC detected in human cervical cancer tissue, human placenta tissue. Observed molecular weight by Western-blot: 25-30 kDa

## Preparation

This antibody was obtained by immunization of Peptide (Accession Number: Q13892). Purification method: Antigen affinity purified.

## Formulation

PBS with 0.02% sodium azide and 50% glycerol pH 7.3.

## Storage

Store at -20°C. DO NOT ALIQUOT

## Clonality

Polyclonal

## Ig Type

Rabbit IgG

## Applications

ELISA, WB, IHC

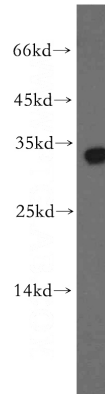
## Dilutions

Recommended Dilution:

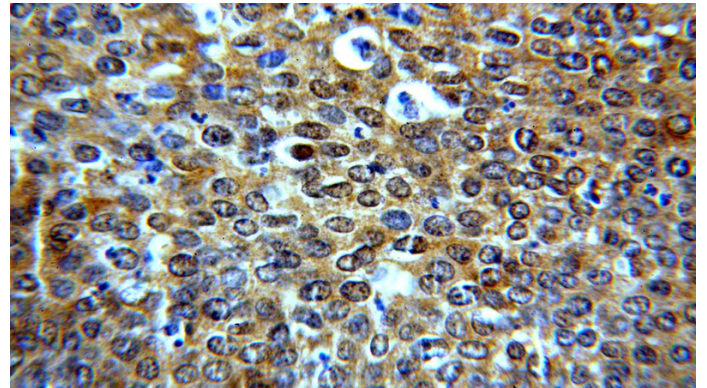
WB: 1:200-1:2000

IHC: 1:20-1:200

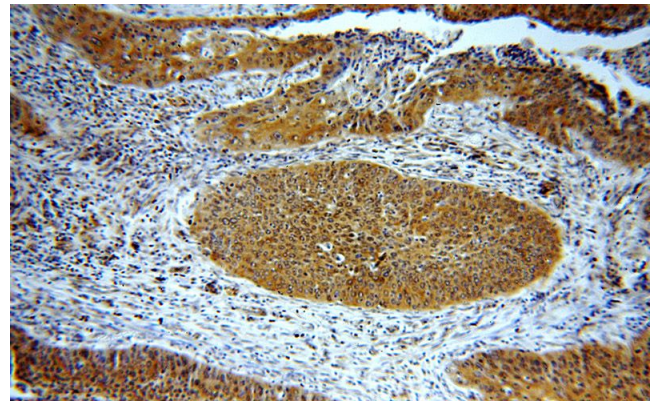
## Validations



human brain tissue were subjected to SDS PAGE followed by western blot with Catalog No:108540(BTF3L3-Specific antibody) at dilution of 1:300



Immunohistochemical of paraffin-embedded human cervical cancer using Catalog No:108540(BTF3L3-Specific antibody) at dilution of 1:50 (under 40x lens)



Immunohistochemical of paraffin-embedded human cervical cancer using Catalog No:108540(BTF3L3-Specific antibody) at dilution of 1:50 (under 10x lens)