

# Human APOL1/apolipoprotein L1 (His Tag)



Catalog Number: 500540

## General Information

### Gene Name Synonym

Apolipoprotein L, 1

### Protein Construction

A DNA sequence encoding the human APOL1 (Met 1-Leu398) (Q2KHQ6) was expressed, with a C-terminal polyhistidine tag.

### Organism

Human

### Expression Host

Baculovirus-Insect Cells

## QC Testing

### Purity

> 91 % as determined by SDS-PAGE

### Endotoxin

< 1.0 EU per  $\mu\text{g}$  of the protein as determined by the LAL method

### Stability

Samples are stable for up to twelve months from date of receipt at  $-70^{\circ}\text{C}$

### Predicted N terminal

Glu 28

### Molecular Mass

The secreted recombinant human APOL1 consists

of 381 amino acids and predicts a molecular mass of 42.5 KDa. The apparent molecular mass of the protein is approximately 44 KDa in SDS-PAGE under reducing conditions due to glycosylation.

### Formulation

Lyophilized from sterile 20mM Tris, 500mM NaCl, pH 7.4, 10% gly, 3mM DTT

1. 5 % trehalose and mannitol are added as protectants before lyophilization.
2. Please contact us for any concerns or special requirements.

## Usage Guide

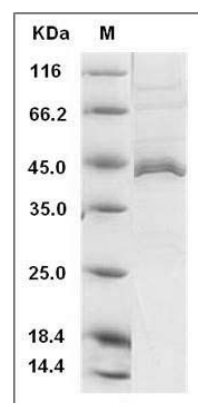
### Storage

Store it under sterile conditions at  $-20^{\circ}\text{C}$  to  $-80^{\circ}\text{C}$ . It is recommended that the protein be aliquoted for optimal storage. Avoid repeated freeze-thaw cycles.

### Reconstitution

Adding sterile water, prepare a stock solution of 0.25 mg/ml. Concentration is measured by UV-Vis.

### SDS-PAGE



Human APOL1 / apolipoprotein L1 Protein (His Tag) SDS-PAGE