

# TIMP-2 antibody

Catalog Number: 116140

## Product name

TIMP-2 antibody

Recommended Dilution:

WB: 1:500-1:5000

## Specificity

Human, Mouse, Rat; other species not tested.

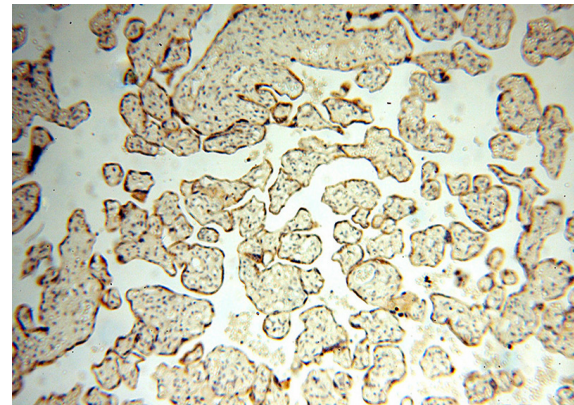
IHC: 1:20-1:200

IF: 1:10-1:100

## Antibody description

TIMP-2 Rabbit Polyclonal antibody. Positive WB detected in Transfected HEK-293 cells. Positive IF detected in HepG2 cells. Positive IHC detected in human placenta tissue, human brain tissue, human cervical cancer tissue, human heart tissue, human kidney tissue, human lung tissue, human skin tissue, human spleen tissue, human testis tissue.

## Validations



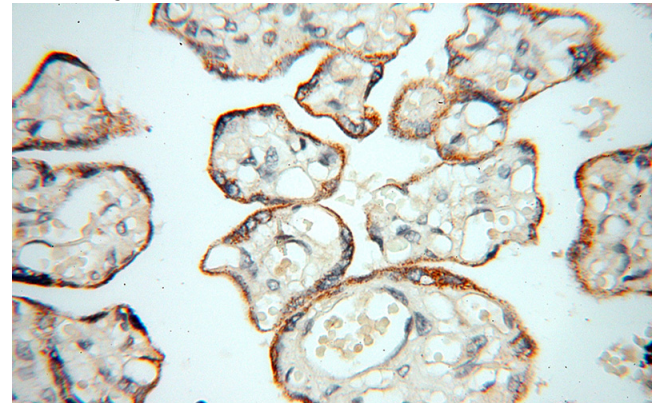
## Preparation

This antibody was obtained by immunization of TIMP-2 recombinant protein (Accession Number: NM\_003255). Purification method: Antigen affinity purified.

Immunohistochemical of paraffin-embedded human placenta using Catalog No:116140(TIMP2 antibody) at dilution of 1:50 (under 10x lens)

## Formulation

PBS with 0.02% sodium azide and 50% glycerol pH 7.3.



## Storage

Store at -20°C. DO NOT ALIQUOT

Immunohistochemical of paraffin-embedded human placenta using Catalog No:116140(TIMP2 antibody) at dilution of 1:50 (under 40x lens)

## Clonality

Polyclonal

## Ig Type

Rabbit IgG

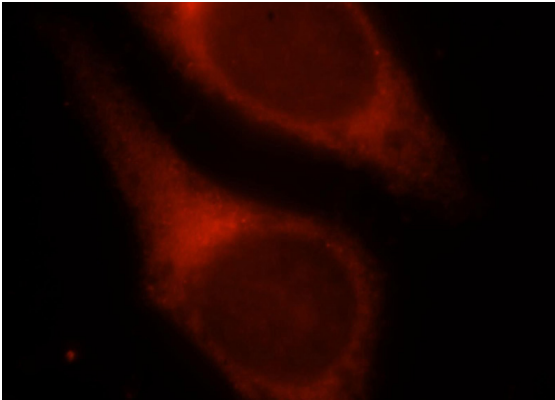
## Applications

ELISA, IHC, IF, WB

## Dilutions

# TIMP-2 antibody

Catalog Number: 116140



Immunofluorescent analysis of HepG2 cells, using TIMP2 antibody Catalog No:116140 at 1:25 dilution and Rhodamine-labeled goat anti-rabbit



Transfected HEK-293 cells were subjected to SDS PAGE followed by western blot with Catalog No:116140(TIMP2 Antibody) at dilution of 1:1000