

SUOX antibody

Catalog Number: 115840

Product name

SUOX antibody

IHC: 1:20-1:200

IF: 1:10-1:100

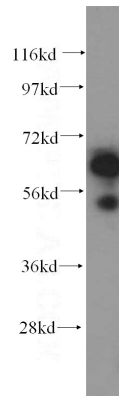
Specificity

Human, Mouse, Rat; other species not tested.

Antibody description

SUOX Rabbit Polyclonal antibody. Positive WB detected in human liver tissue, L02 cells, mouse liver tissue. Positive FC detected in HeLa cells. Positive IF detected in HeLa cells. Positive IHC detected in human liver tissue. Observed molecular weight by Western-blot: 52 kDa, 60 kDa

Validations



Preparation

This antibody was obtained by immunization of SUOX recombinant protein (Accession Number: NM_000456). Purification method: Antigen affinity purified.

human liver tissue were subjected to SDS PAGE followed by western blot with Catalog No:115840(SUOX antibody) at dilution of 1:1000

Formulation

PBS with 0.02% sodium azide and 50% glycerol pH 7.3.

Storage

Store at -20°C. DO NOT ALIQUOT

Clonality

Polyclonal

Ig Type

Rabbit IgG

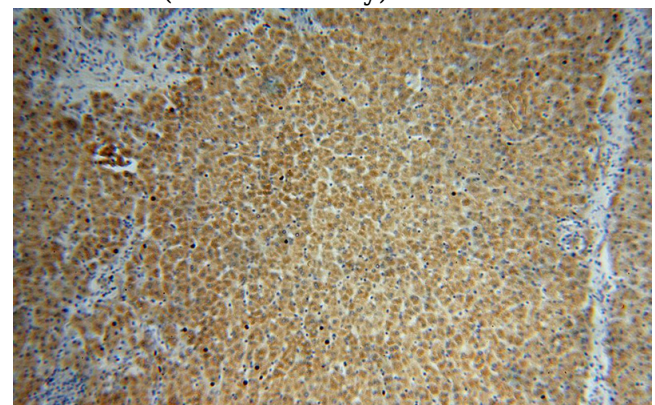
Applications

ELISA, WB, IHC, IF, FC

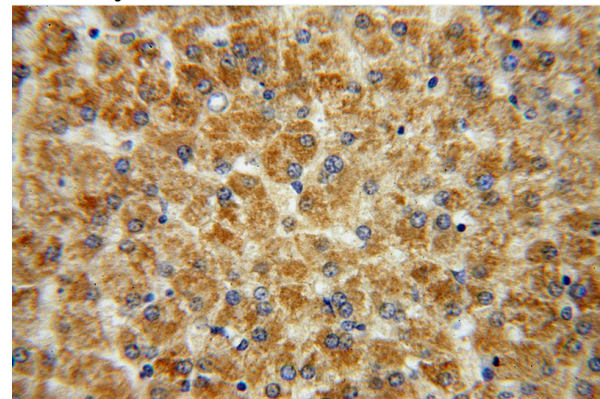
Dilutions

Recommended Dilution:

WB: 1:500-1:5000



Immunohistochemical of paraffin-embedded human liver using Catalog No:115840(SUOX antibody) at dilution of 1:100 (under 10x lens)

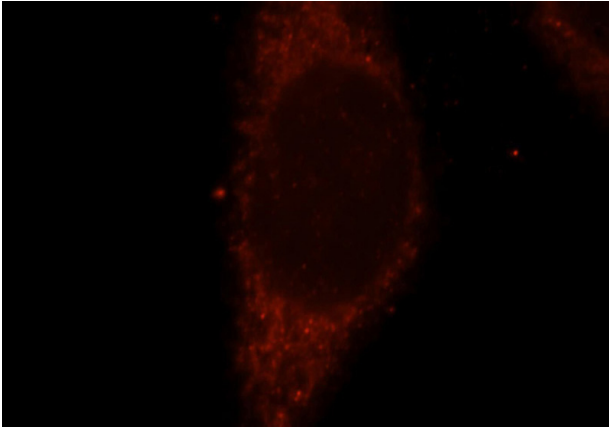


Immunohistochemical of paraffin-embedded human liver using Catalog No:115840(SUOX

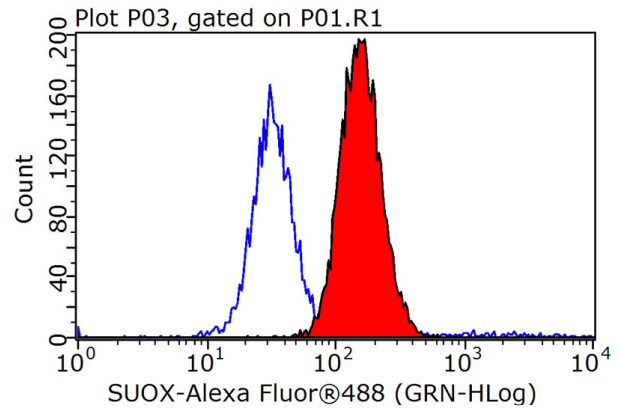
SUOX antibody

Catalog Number: 115840

antibody) at dilution of 1:100 (under 40x lens)



Immunofluorescent analysis of HeLa cells, using SUOX antibody Catalog No:115840 at 1:25 dilution and Rhodamine-labeled goat anti-rabbit IgG (red).



1X10⁶ HeLa cells were stained with 0.2ug SUOX antibody (Catalog No:115840, red) and control antibody (blue). Fixed with 90% MeOH blocked with 3% BSA (30 min). Alexa Fluor 488-conjugated AffiniPure Goat Anti-Rabbit IgG(H+L) with dilution 1:1000.