

SLC26A2 Polyclonal Antibody



Catalog Number: 164840

Product name

SLC26A2 Polyclonal Antibody

Specificity

Human

Antibody description

Polyclonal antibody to SLC26A2

Preparation

Antigen: Recombinant fusion protein containing a sequence corresponding to amino acids 540-739 of human SLC26A2 (NP_000103.2).

Formulation

PBS with 0.02% sodium azide, 50% glycerol, pH7.3.

Storage

Store at -20°C. Avoid freeze / thaw cycles.

Clonality

Polyclonal

Ig Type

Rabbit IgG

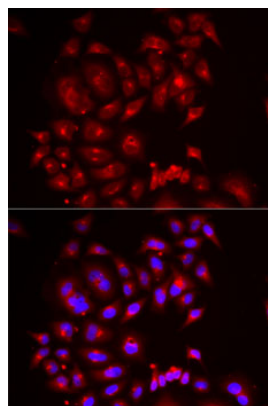
Applications

IF

Dilutions

IF 1:50 - 1:100

Validations



Immunofluorescence - SLC26A2 Polyclonal Antibody

Immunofluorescence analysis of MCF7 cells using SLC26A2 antibody . Blue: DAPI for nuclear staining.