

MRPS11 antibody



Catalog Number: 112840

Product name

MRPS11 antibody

Specificity

human, mouse, rat; other species not tested.

Antibody description

MRPS11 Rabbit Polyclonal antibody. Positive IHC detected in human kidney. Positive WB detected in HeLa cells, HepG2 cells, mouse liver tissue. Observed molecular weight by Western-blot: 17kd

Preparation

This antibody was obtained by immunization of MRPS11 recombinant protein (Accession Number: NM_001321970). Purification method: Antigen affinity purified.

Formulation

PBS with 0.02% sodium azide and 50% glycerol pH 7.3.

Storage

Store at -20°C. DO NOT ALIQUOT

Clonality

Polyclonal

Ig Type

Rabbit IgG

Applications

ELISA, WB, IHC

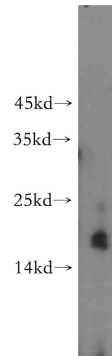
Dilutions

Recommended Dilution:

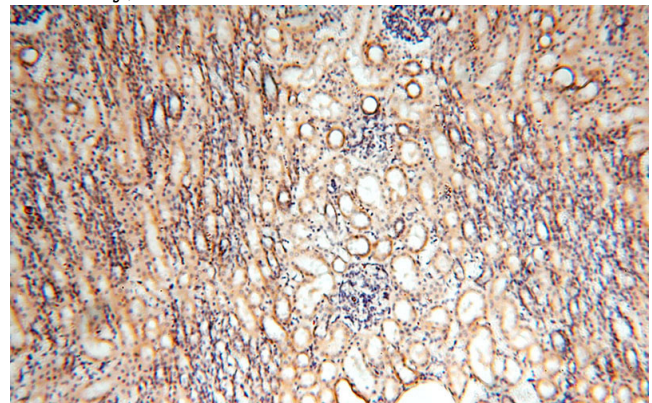
WB: 1:200-1:2000

IHC: 1:20-1:200

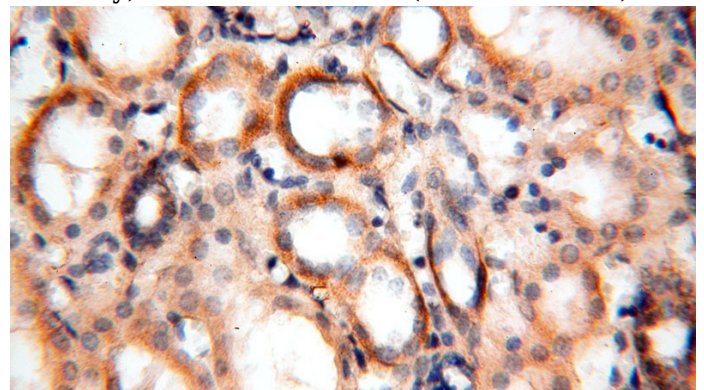
Validations



HeLa cells were subjected to SDS PAGE followed by western blot with Catalog No:112840(MRPS11 antibody) at dilution of 1:500



Immunohistochemical of paraffin-embedded human kidney using Catalog No:112840(MRPS11 antibody) at dilution of 1:100 (under 10x lens)



Immunohistochemical of paraffin-embedded human kidney using Catalog No:112840(MRPS11 antibody) at dilution of 1:100 (under 40x lens)