

## General Information

### Gene Name Synonym

High affinity IL-2 receptor subunit beta; p70-75

### Protein Construction

The mature form of human IL2 R $\beta$  (NP\_000869.1) extracellular domain (Met 1-Asp 239) with five amino acids (DDDDK) at the C-terminus was expressed and purified.

### Organism

Human

### Expression Host

Human Cells

## QC Testing

### Activity

Measured by its binding ability in a functional ELISA.

Immobilized human IL2R $\beta$  at 10  $\mu$ g/ml (100  $\mu$ l/well) can bind biotinylated human IL2 (Cat:11848-HNAE), The EC<sub>50</sub> of biotinylated human IL2 (Cat:11848-HNAE) is 0.1-0.24  $\mu$ g/ml.

### Purity

> 90 % as determined by SDS-PAGE

### Endotoxin

< 1.0 EU per  $\mu$ g of the protein as determined by the LAL method

### Stability

Samples are stable for up to twelve months from date of receipt at -70°C

### Predicted N terminal

Ala 27

### Molecular Mass

The mature recombinant human IL2 R $\beta$  consists of 219 amino acids and has a predicted molecular mass of 25.2 kDa. As a result of glycosylation, the rh IL2 R $\beta$  migrates as an approximately 40 kDa protein in SDS-PAGE under reducing conditions.

### Formulation

Lyophilized from sterile 100mM NaCl, 50mM Tris, pH 7.5

1. 5 % trehalose and mannitol are added as protectants before lyophilization.

2. Please contact us for any concerns or special requirements.

## Usage Guide

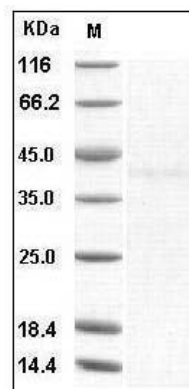
### Storage

Store it under sterile conditions at -20°C to -80°C. It is recommended that the protein be aliquoted for optimal storage. Avoid repeated freeze-thaw cycles.

### Reconstitution

Adding sterile water, prepare a stock solution of 0.25 mg/ml. Concentration is measured by UV-Vis.

### SDS-PAGE



Human CD122 / IL-2RB Protein SDS-PAGE