

# Anti-FDFT1 Rabbit antibody



Catalog Number: 167440

## Product name

Anti-FDFT1 Rabbit antibody

## Specificity

Human, Mouse, Rat

## Antibody description

FDFT1 Rabbit polyclonal antibody

## Preparation

Antigen: A synthesized peptide derived from human FDFT1

## Formulation

Rabbit IgG in phosphate buffered saline , pH 7.4, 150mM NaCl, 0.02% sodium azide and 50% glycerol.

## Storage

Store at 4°C short term. Store at -20°C long term. Avoid freeze / thaw cycle.

## Clonality

Polyclonal

## Ig Type

Rabbit IgG

## Applications

WB, IHC-P, ICC/IF, IP

## Dilutions

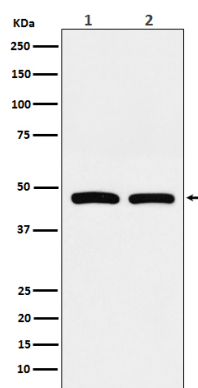
WB: 1/500-1/1000

IHC: 1/100-1/500

ICC/IF: 1/50-1/200

IP: 1/50

## Validations



Western blot analysis of FDFT1 expression in (1) HepG2 cell lysate; (2) RAW264.7 cell lysate.