

# Anti-Glypican 3/GPC3/OCI-5 antibody



Catalog Number: 106440

## Product name

Monoclonal

Anti-Glypican 3/GPC3/OCI-5 antibody

## Ig Type

Rabbit IgG

## Specificity

Human Glypican 3 / GPC3 / OCI-5

## Applications

FCM

## Antibody description

Rabbit monoclonal to Glypican 3/GPC3/OCI-5

## Dilutions

FCM

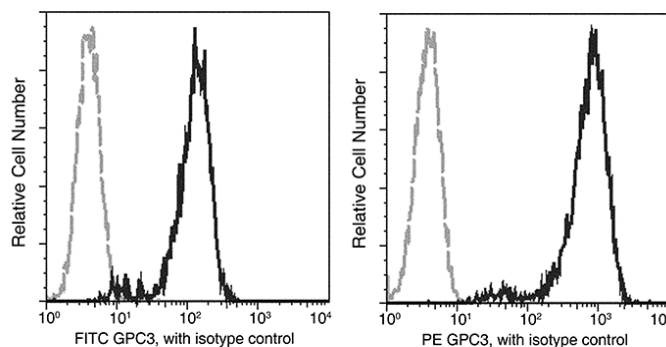
## Preparation

This antibody was obtained from a rabbit immunized with a synthetic peptide corresponding to the center region of the Human Glypican 3 / GPC3 / OCI-5, and purified by antigen affinity chromatography.

## Validations

## Formulation

Aqueous solution containing 0.5% BSA and 0.09% sodium azide



## Storage

This antibody is stable for 12 months from date of receipt when stored at 2°C-8°C. Protected from prolonged exposure to light. Do not freeze ! Sodium azide is toxic to cells and should be disposed of properly. Flush with large volumes of water during disposal.

Glypican 3 / GPC3 / OCI-5 Antibody, Rabbit MAb, Flow Cytometry

Flow cytometric analysis of Human GPC3 expression on HepG2 cells. Cells were stained with FITC-conjugated anti-Human GPC3. The fluorescence histograms were derived from gated events with the forward and side light-scatter characteristics of intact cells.

## Clonality