

MAPKAPK2 antibody



Catalog Number: 112440

Product name

MAPKAPK2 antibody

WB: 1:200-1:2000

IHC: 1:20-1:200

Specificity

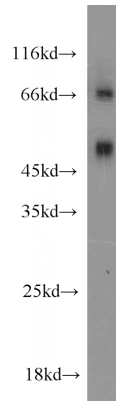
Human, Mouse; other species not tested.

IF: 1:50-1:500

Antibody description

MAPKAPK2 Rabbit Polyclonal antibody. Positive IHC detected in human kidney tissue, human breast cancer tissue. Positive IF detected in HeLa cells. Positive WB detected in HeLa cells, A549 cells, mouse colon tissue, mouse skeletal muscle tissue. Observed molecular weight by Western-blot: 47-50 kDa

Validations



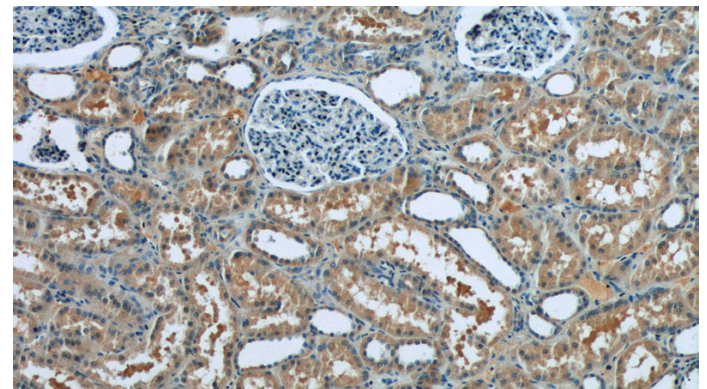
Preparation

This antibody was obtained by immunization of MAPKAPK2 recombinant protein (Accession Number: NM_032960). Purification method: Antigen affinity purified.

HeLa cells were subjected to SDS PAGE followed by western blot with Catalog No:112440(MAPKAPK2 antibody) at dilution of 1:1000

Formulation

PBS with 0.1% sodium azide and 50% glycerol pH 7.3.



Storage

Store at -20°C. DO NOT ALIQUOT

Clonality

Polyclonal

Ig Type

Rabbit IgG

Applications

ELISA, WB, IHC, IF

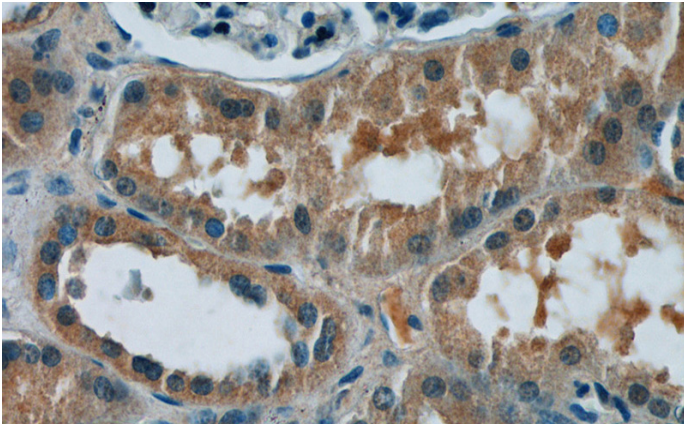
Dilutions

Recommended Dilution:

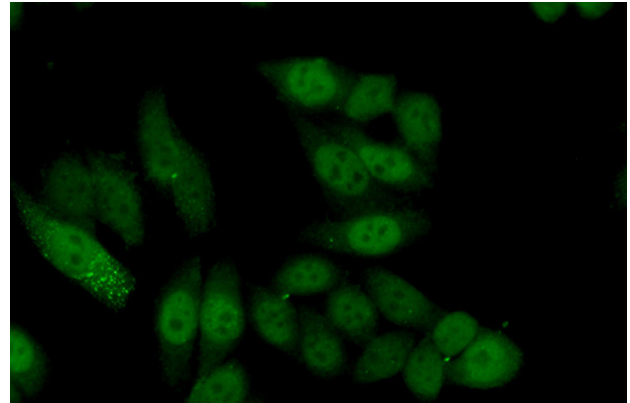
Immunohistochemistry of paraffin-embedded human kidney tissue slide using Catalog No:112440(MAPKAPK2 Antibody) at dilution of 1:50 (under 10x lens)

MAPKAPK2 antibody

Catalog Number: 112440



Immunohistochemistry of paraffin-embedded human kidney tissue slide using Catalog No:112440(MAPKAPK2 Antibody) at dilution of 1:50 (under 40x lens)



Immunofluorescent analysis of (10% Formaldehyde) fixed HeLa cells using Catalog No:112440(MAPKAPK2 Antibody) at dilution of 1:50 and Alexa Fluor 488-conjugated AffiniPure Goat Anti-Rabbit IgG(H+L)