

Anti-DCUN1D1 / SCCRO antibody



Catalog Number: 100440

Product name

Anti-DCUN1D1 / SCCRO antibody

Immunogen

[Human DCUN1D1 / SCCRO \(His Tag\) recombinant protein](#)

Specificity

Human DCUN1D1 / SCCRO

Antibody description

Rabbit polyclonal to DCUN1D1 / SCCRO

Preparation

Produced in rabbits immunized with purified, recombinant Human DCUN1D1 / SCCRO (rh DCUN1D1 / SCCRO; NP_065691.2; Met1-Val259). DCUN1D1 / SCCRO specific IgG was purified by Human DCUN1D1 / SCCRO affinity chromatography.

Formulation

0.2 µm filtered solution in PBS

Storage

This antibody can be stored at 2°C-8°C for one month without detectable loss of activity. Antibody products are stable for twelve months from date of receipt when stored at -20°C to -80°C.

Preservative-Free.

Sodium azide is recommended to avoid contamination (final concentration 0.05%-0.1%). It is toxic to cells and should be disposed of properly. Avoid repeated freeze-thaw cycles.

Clonality

Polyclonal

Ig Type

Rabbit IgG

Applications

ELISA, WB, IP

Dilutions

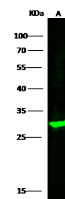
WB: 5-10 µg/ml

ELISA:0.1-0.2 µg/mL

This antibody can be used at 0.1-0.2 µg/mL with the appropriate secondary reagents to detect Human DCUN1D1 / SCCRO. The detection limit for Human DCUN1D1 / SCCRO is < 0.039 ng/well.

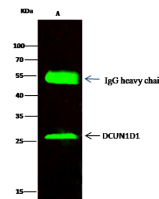
IP: 1-4 µg/mg of lysate

Validations



| Lanes | A |
|----------------------------|------------------------------------------------------------------------------------------------------------------|
| Sample (whole cell lysate) | HepG2 |
| Sample Volume (µg/lane) | 30 |
| Gel | 13% SDS-PAGE reducing gel |
| Recommended Concentration | 5-10µg/ml |
| Secondary Antibody | Dylight 800 labeled Antibody to Rabbit IgG (F11), at 1:5000 dilution. Developed using Odyssey imaging system. |
| Explanation | Predicted band size : 30 kDa Observed band size : 30 kDa |

DCUN1D1 / SCCRO Antibody, Rabbit PAb, Antigen Affinity Purified, Western blot



| Lanes | A |
|----------------------------|-----------------------------------------------------------------------|
| Sample (whole cell lysate) | HepG2 |
| Sample quantity | 0.5 mg |
| IP antibody quantity | 2 µg |
| Protein G agarose | 15 µl of 50% Protein G Agarose |
| Gel | 13% SDS-PAGE reducing gel |
| Primary antibody | DCUN1D1 antibody at 5 µg/ml |
| Secondary antibody | Dylight 800-labeled antibody to rabbit IgG (F11), at 1:5000 dilution. |

DCUN1D1 / SCCRO Antibody, Rabbit PAb, Antigen Affinity Purified, Immunoprecipitation