

# Anti-CD147 Rabbit antibody



Catalog Number: 168040

## Product name

Anti-CD147 Rabbit antibody

## Specificity

Human, Mouse, Rat

## Antibody description

CD147 Rabbit monoclonal antibody

## Preparation

Antigen: A synthetic peptide of human CD147

## Formulation

50nM Tris-Glycine(pH 7.4), 0.15M NaCl, 40%Glycerol, 0.01% sodium azide and 0.05% BSA

## Storage

Store at 4°C short term. Store at -20°C long term. Avoid freeze / thaw cycle.

## Clonality

Monoclonal

## Ig Type

Rabbit IgG

## Applications

WB, IHC-P, ICC/IF

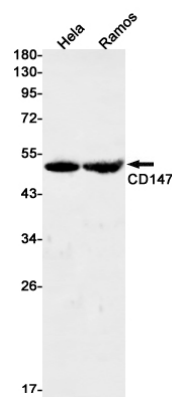
## Dilutions

WB: 1/1000-1/5000

IHC: 1/50-1/200

ICC/IF: 1/20-1/50

## Validations



Western blot detection of CD147 in HeLa,Ramos cell lysates using CD147 Rabbit mAb(1:1000 diluted).Predicted band size:42kDa.Observed band size:42kDa.