

# ZFP36 antibody

Catalog Number: 117040

## Product name

ZFP36 antibody

IHC: 1:20-1:200

IF: 1:10-1:100

## Specificity

Human, Mouse, Rat; other species not tested.

## Antibody description

ZFP36 Rabbit Polyclonal antibody. Positive WB detected in mouse lung tissue, A549 cells. Positive IF detected in HepG2 cells. Positive IHC detected in human breast cancer tissue, human bladder tissue. Observed molecular weight by Western-blot: 40-45 kDa

## Preparation

This antibody was obtained by immunization of ZFP36 recombinant protein (Accession Number: NM\_003407). Purification method: Antigen affinity purified.

## Formulation

PBS with 0.02% sodium azide and 50% glycerol pH 7.3.

## Storage

Store at -20°C. DO NOT ALIQUOT

## Clonality

Polyclonal

## Ig Type

Rabbit IgG

## Applications

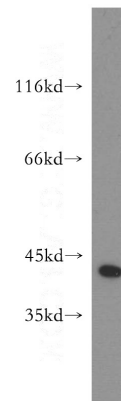
ELISA, WB, IF, IHC

## Dilutions

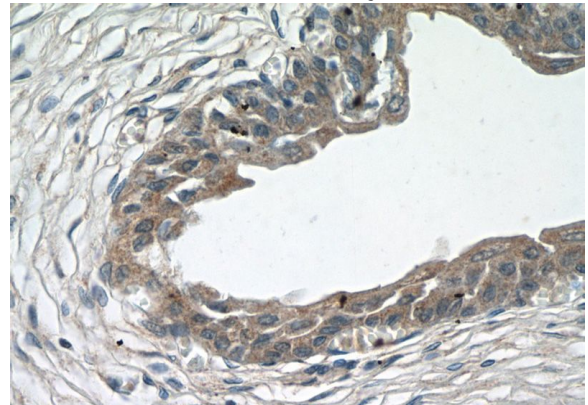
Recommended Dilution:

WB: 1:200-1:2000

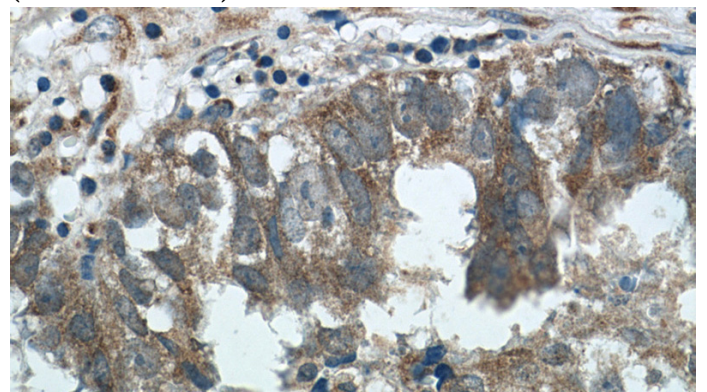
## Validations



mouse lung tissue were subjected to SDS PAGE followed by western blot with Catalog No:117040(ZFP36 antibody) at dilution of 1:300



Immunohistochemistry of paraffin-embedded human bladder tissue slide using Catalog No:117040(ZFP36 Antibody) at dilution of 1:50 (under 40x lens)



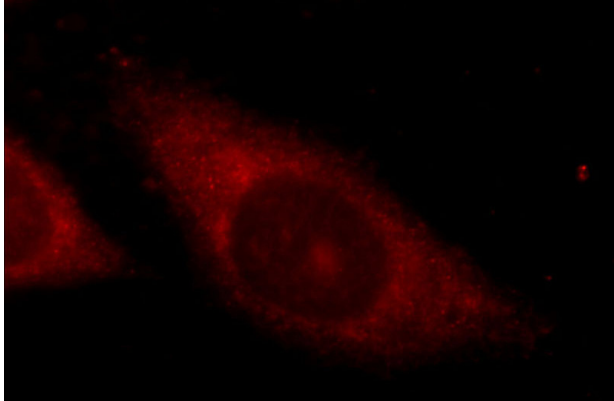
Immunohistochemistry of paraffin-embedded

# ZFP36 antibody

Catalog Number: 117040

---

human breast cancer tissue slide using Catalog No:117040(ZFP36 Antibody) at dilution of 1:50 (under 40x lens)



Immunofluorescent analysis of HepG2 cells using Catalog No:117040(ZFP36 Antibody) at dilution of 1:25 and Rhodamine-Goat anti-Rabbit IgG