

Anti-KCNG3 antibody



Catalog Number: 176040

Product name

Anti-KCNG3 antibody

Specificity

Human, Mouse, Rat

Antibody description

Rabbit polyclonal antibody to KCNG3

Preparation

This antigen of this antibody was the antiserum was produced against synthesized peptide derived from human kcng3. aa range:183-232

Formulation

Liquid, Liquid in PBS containing 50% glycerol, 0.5% BSA and 0.02% sodium azide.

Storage

Store at +4°C after thawing. Aliquot store at -20°C or -80°C. Avoid repeated freeze / thaw cycles.

Clonality

Polyclonal

Ig Type

Rabbit IgG

Applications

WB

Dilutions

WB: 1:500-1:2000

Validations

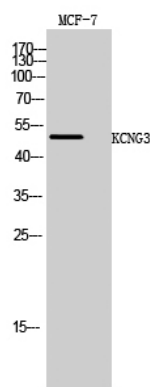


Fig1.; Western Blot analysis of MCF-7 cells using KCNG3 Polyclonal Antibody