

NCL antibody

Catalog Number: 113040

Product name

NCL antibody

WB: 1:1000-1:10000

IP: 1:500-1:5000

Specificity

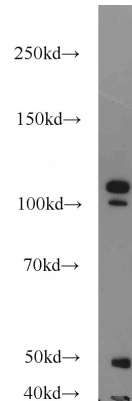
Human, Mouse, Rat; other species not tested.

IHC: 1:20-1:200

Antibody description

NCL Rabbit Polyclonal antibody. Positive IHC detected in human prostate cancer tissue, human cervical cancer tissue, human prostate hyperplasia tissue. Positive IP detected in HeLa cells. Positive WB detected in HEK-293 cells, rat brain tissue. Observed molecular weight by Western-blot: 100-110 kDa

Validations



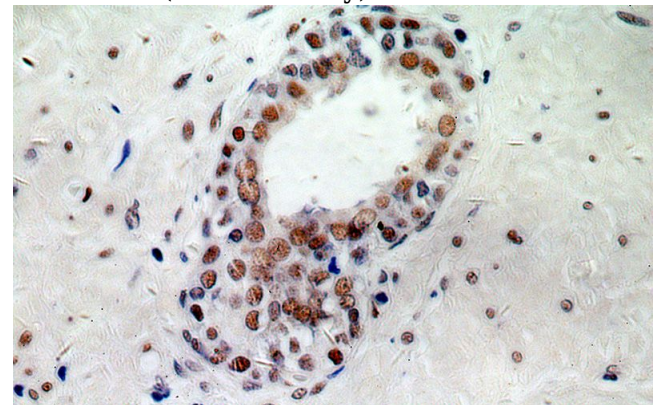
Preparation

This antibody was obtained by immunization of NCL recombinant protein (Accession Number: BC006494). Purification method: Antigen affinity purified.

HEK-293 cells were subjected to SDS PAGE followed by western blot with Catalog No:113040(NCL antibody) at dilution of 1:2000

Formulation

PBS with 0.1% sodium azide and 50% glycerol pH 7.3.



Storage

Store at -20°C. DO NOT ALIQUOT

Immunohistochemical of paraffin-embedded human prostate cancer using Catalog No:113040(NCL antibody) at dilution of 1:100

Clonality

Polyclonal

Ig Type

Rabbit IgG

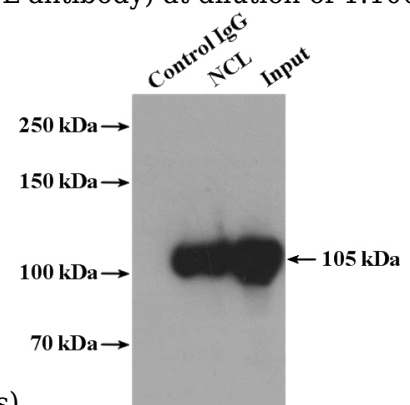
Applications

ELISA, WB, IHC, IP

Dilutions

Recommended Dilution:

(under 40x lens)



NCL antibody



Catalog Number: 113040

IP Result of anti-NCL (IP:Catalog No:113040, 4ug; Detection:Catalog No:113040 1:1000) with HeLa cells lysate 3200ug.