

KHSRP antibody

Catalog Number: 112040

Product name

KHSRP antibody

Specificity

Human, Mouse, Rat; other species not tested.

Antibody description

KHSRP Rabbit Polyclonal antibody. Positive IF detected in HeLa cells. Positive IHC detected in human testis tissue. Positive WB detected in HeLa cells, Jurkat cells. Observed molecular weight by Western-blot: 75kd

Preparation

This antibody was obtained by immunization of Peptide (Accession Number: NM_003685). Purification method: Antigen affinity purified.

Formulation

PBS with 0.02% sodium azide and 50% glycerol pH 7.3.

Storage

Store at -20°C. DO NOT ALIQUOT

Clonality

Polyclonal

Ig Type

Rabbit IgG

Applications

ELISA, WB, IHC, IF

Dilutions

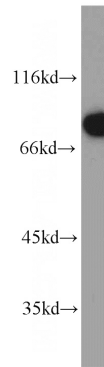
Recommended Dilution:

WB: 1:200-1:2000

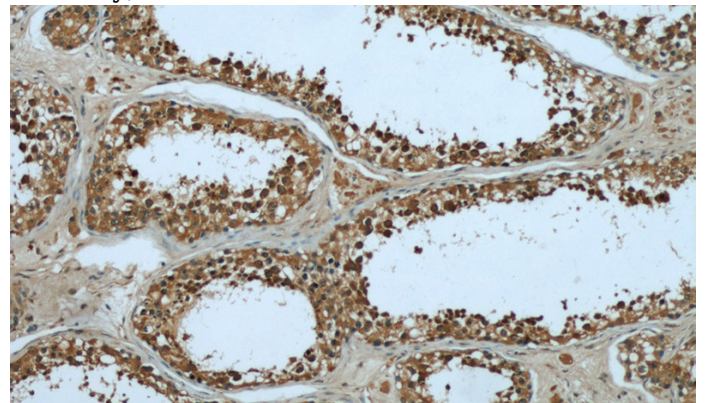
IHC: 1:20-1:200

IF: 1:20-1:200

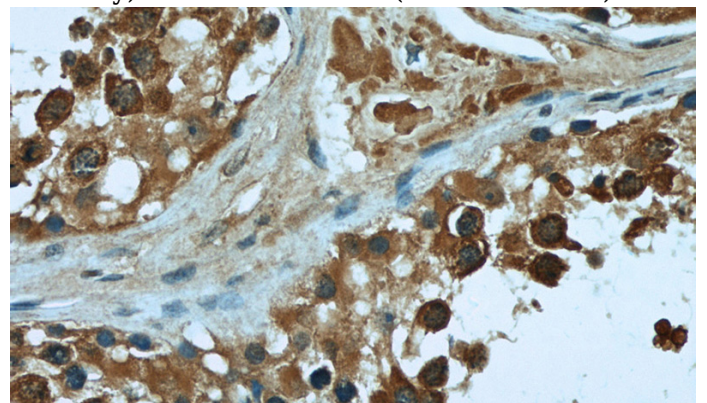
Validations



HeLa cells were subjected to SDS PAGE followed by western blot with Catalog No:112040(KHSRP antibody) at dilution of 1:500



Immunohistochemical of paraffin-embedded human testis using Catalog No:112040(KHSRP antibody) at dilution of 1:50 (under 10x lens)

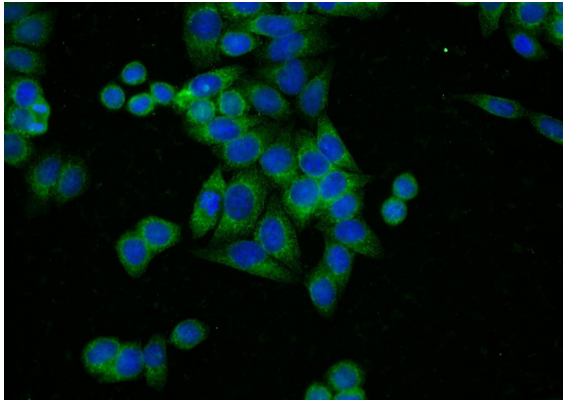


Immunohistochemical of paraffin-embedded human testis using Catalog No:112040(KHSRP antibody) at dilution of 1:50 (under 40x lens)

KHSRP antibody



Catalog Number: 112040



Immunofluorescent analysis of HeLa cells using Catalog No:112040(KHSRP Antibody) at dilution of 1:50 and Alexa Fluor 488-conjugated AffiniPure Goat Anti-Rabbit IgG(H+L)