

Human RGMA (His Tag) recombinant protein



Catalog Number: 500040

General Information

Gene Name Synonym

RGM domain family member A

Protein Construction

A DNA sequence encoding the human RGMA isoform 3 (NP_064596.2) (Met 1-Gly 422), without the C-terminal pro peptide, was fused with a polyhistidine tag at the C-terminus.

Organism

Human

Expression Host

Human Cells

QC Testing

Purity

> 90 % as determined by SDS-PAGE

Endotoxin

< 1.0 EU per μ g of the protein as determined by the LAL method

Stability

Samples are stable for up to twelve months from date of receipt at -70°C

Predicted N terminal

Cys 48

Molecular Mass

Human RGMA consists of 450 amino acids. The signal peptide of RGMA is from amino acid 1 to

47. It contains two propeptides, namely from amino acid 48 to 168 and from amino acid 425 to 450. At low pH, the pro-peptide is autocatalytically cleaved and the two chains remain linked via two disulfide bonds.

Formulation

Lyophilized from sterile PBS, pH 7.4

1. 5 % trehalose and mannitol are added as protectants before lyophilization.

2. Please contact us for any concerns or special requirements.

Usage Guide

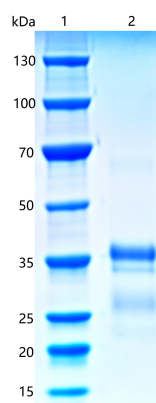
Storage

Store it under sterile conditions at -20°C to -80°C. It is recommended that the protein be aliquoted for optimal storage. Avoid repeated freeze-thaw cycles.

Reconstitution

Adding sterile water, prepare a stock solution of 0.25 mg/ml. Concentration is measured by UV-Vis.

SDS-PAGE



Human RGMA Protein (His Tag) SDS-PAGE

Lane 1: Marker, Lane 2: RGMA