

# CTR9 antibody

Catalog Number: 109730

## Product name

CTR9 antibody

IHC: 1:20-1:200

IF: 1:10-1:100

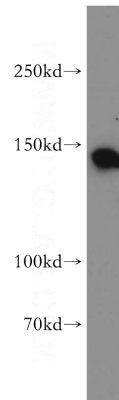
## Specificity

human, mouse, rat; other species not tested.

## Validations

## Antibody description

CTR9 Rabbit Polyclonal antibody. Positive WB detected in Raji cells, HEK-293 cells, HeLa cells, mouse lung tissue, mouse testis tissue, L02 cells. Positive IHC detected in human breast cancer. Positive IF detected in Hela. Observed molecular weight by Western-blot: 130-150kd



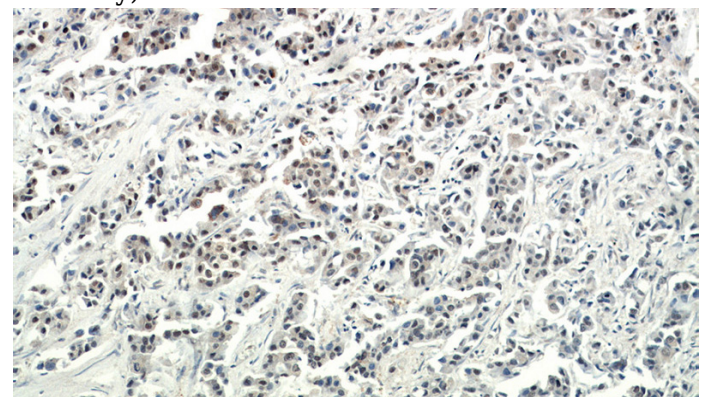
## Preparation

This antibody was obtained by immunization of CTR9 recombinant protein (Accession Number: NM\_014633). Purification method: Antigen affinity purified.

Raji cells were subjected to SDS PAGE followed by western blot with Catalog No:109730(CTR9 antibody) at dilution of 1:500

## Formulation

PBS with 0.02% sodium azide and 50% glycerol pH 7.3.



## Storage

Store at -20°C. DO NOT ALIQUOT

## Clonality

Polyclonal

Immunohistochemical of paraffin-embedded human breast cancer using Catalog No:109730(CTR9 antibody) at dilution of 1:200 (under 10x lens)

## Ig Type

Rabbit IgG

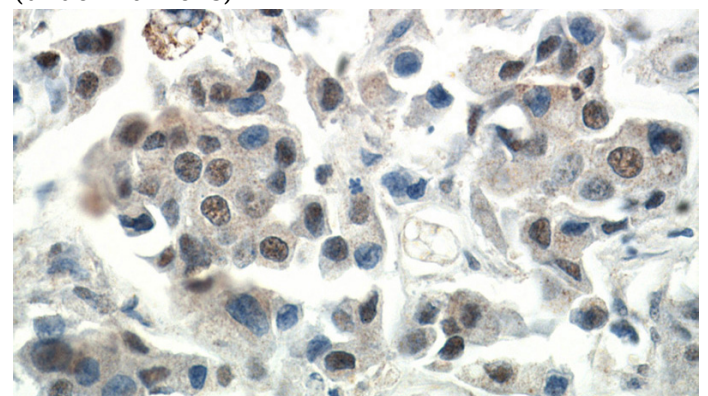
## Applications

ELISA, WB, IHC, IF

## Dilutions

Recommended Dilution:

WB: 1:500-1:5000



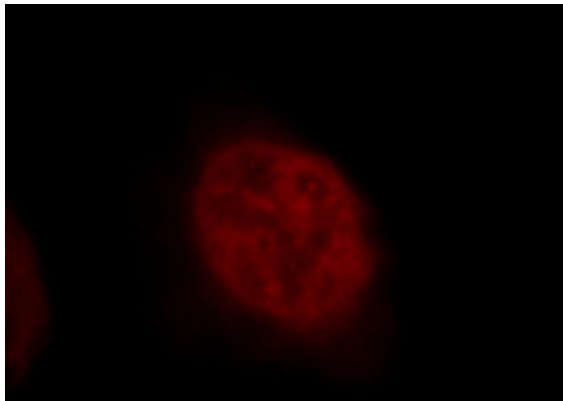
Immunohistochemical of paraffin-embedded

# CTR9 antibody

Catalog Number: 109730

---

human breast cancer using Catalog No:109730(CTR9 antibody) at dilution of 1:200 (under 40x lens)



Immunofluorescent analysis of HeLa cells, using CTR9 antibody Catalog No:109730 at 1:25 dilution and Rhodamine-labeled goat anti-rabbit IgG (red).