

# Anti-MS2 Rabbit antibody



Catalog Number: 166730

## Product name

Anti-MS2 Rabbit antibody

## Specificity

Human, Mouse, Rat

## Antibody description

MS2 Rabbit polyclonal antibody

## Preparation

Antigen: A synthetic peptide of MS2

## Formulation

Supplied in 50nM Tris-Glycine(pH 7.4), 0.15M NaCl, 40%Glycerol, 0.01% sodium azide and 0.05% BSA.

## Storage

Store at -20°C. Stable for 12 months from date of receipt.

## Clonality

Polyclonal

## Ig Type

Rabbit IgG

## Applications

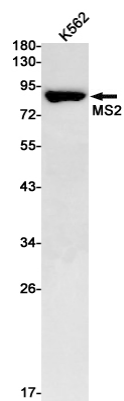
WB, IP

## Dilutions

WB: 1/1000

IP: 1/20

## Validations



Western blot detection of MS2 in K562 cell lysates using MS2 Rabbit pAb(1:1000 diluted).Predicted band size:89kDa.Observed band size:89kDa.