

STOML1 antibody



Catalog Number: 115730

Product name

STOML1 antibody

Specificity

Human, Mouse, Rat; other species not tested.

Antibody description

STOML1 Rabbit Polyclonal antibody. Positive WB detected in A375 cells, human brain tissue. Positive IHC detected in human gliomas tissue. Observed molecular weight by Western-blot: 45 kDa

Preparation

This antibody was obtained by immunization of STOML1 recombinant protein (Accession Number: NM_004809). Purification method: Antigen affinity purified.

Formulation

PBS with 0.1% sodium azide and 50% glycerol pH 7.3.

Storage

Store at -20°C. DO NOT ALIQUOT

Clonality

Polyclonal

Ig Type

Rabbit IgG

Applications

ELISA, WB, IHC

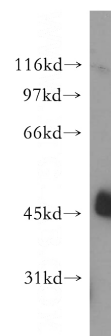
Dilutions

Recommended Dilution:

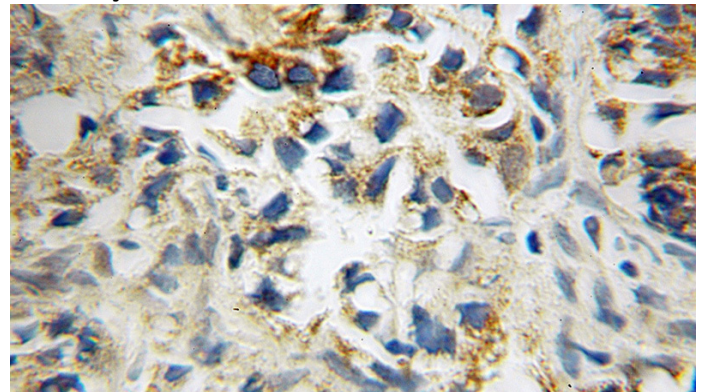
WB: 1:500-1:5000

IHC: 1:20-1:200

Validations



A375 cells were subjected to SDS PAGE followed by western blot with Catalog No:115730(STOML1 antibody) at dilution of 1:300



Immunohistochemical of paraffin-embedded human gliomas using Catalog No:115730(STOML1 antibody) at dilution of 1:100 (under 10x lens)