

# ALIX / PDCD6IP Polyclonal Antibody



Catalog Number: 163730

## Product name

ALIX / PDCD6IP Polyclonal Antibody

## Specificity

Human, Mouse, Rat

## Antibody description

Polyclonal antibody to ALIX / PDCD6IP

## Preparation

Antigen: Recombinant fusion protein containing a sequence corresponding to amino acids 1-180 of human ALIX / PDCD6IP (NP\_037506.2).

## Formulation

PBS with 0.02% sodium azide, 50% glycerol, pH7.3.

## Storage

Store at -20°C. Avoid freeze / thaw cycles.

## Clonality

Polyclonal

## Ig Type

Rabbit IgG

## Applications

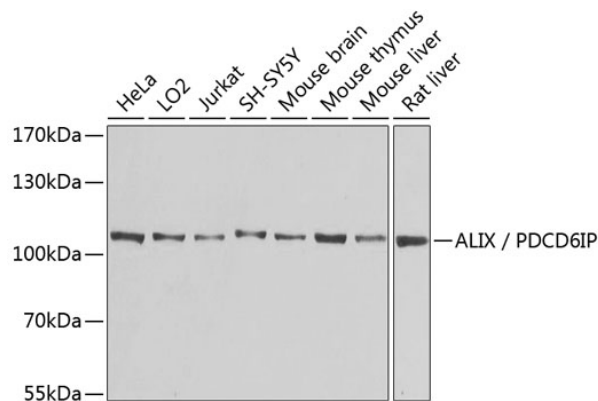
WB, IHC

## Dilutions

WB 1:200 - 1:2000

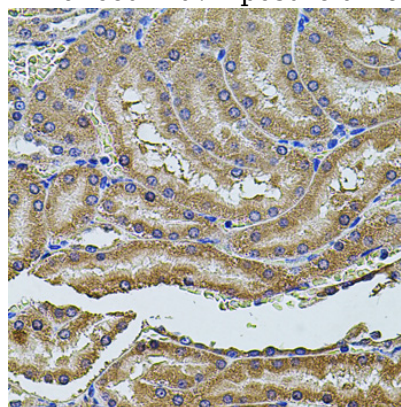
IHC 1:50 - 1:200

## Validations



Western blot - ALIX / PDCD6IP Polyclonal Antibody

Western blot analysis of extracts of various cell lines, using ALIX / PDCD6IP antibody at 1:1000 dilution. Secondary antibody: HRP Goat Anti-Rabbit IgG (H+L) at 1:10000 dilution. Lysates/proteins: 25ug per lane. Blocking buffer: 3% nonfat dry milk in TBST. Detection: ECL Enhanced Kit. Exposure time: 3min.



Immunohistochemistry - ALIX / PDCD6IP Polyclonal Antibody

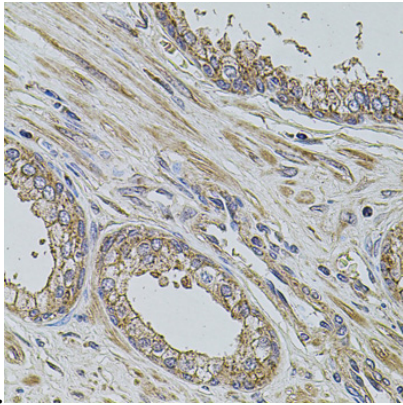
Immunohistochemistry of paraffin-embedded rat kidney using ALIX / PDCD6IP antibody at dilution

# ALIX / PDCD6IP Polyclonal Antibody



Catalog Number: 163730

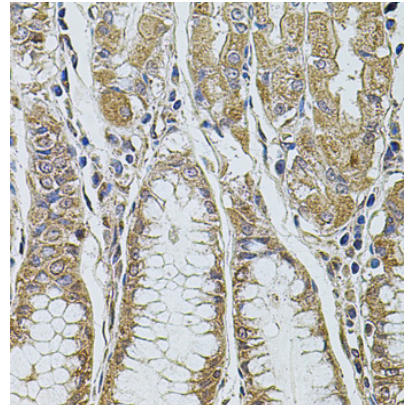
---



of 1:100 (40x lens).

Immunohistochemistry - ALIX / PDCD6IP  
Polyclonal Antibody

Immunohistochemistry of paraffin-embedded  
human prostate using ALIX / PDCD6IP antibody at  
dilution of 1:100 (40x lens).



Immunohistochemistry - ALIX / PDCD6IP  
Polyclonal Antibody

Immunohistochemistry of paraffin-embedded  
human stomach using ALIX / PDCD6IP antibody at  
dilution of 1:100 (40x lens).