

Anti-Cleaved-Caspase-3 p12 Rabbit antibody



Catalog Number: 167330

Product name

Rabbit IgG

Anti-Cleaved-Caspase-3 p12 Rabbit antibody

Applications

Specificity

WB, ICC/IF, FC

Human, Mouse, Rat

Dilutions

Antibody description

WB: 1/1000

Cleaved-Caspase-3 p12 Rabbit polyclonal antibody

ICC/IF: 1/20

Preparation

FC: 1/20

Antigen: Recombinant protein of human Caspase-3 p12

Validations

Formulation

Supplied in 50nM Tris-Glycine(pH 7.4), 0.15M NaCl, 40%Glycerol, 0.01% sodium azide and 0.05% BSA.

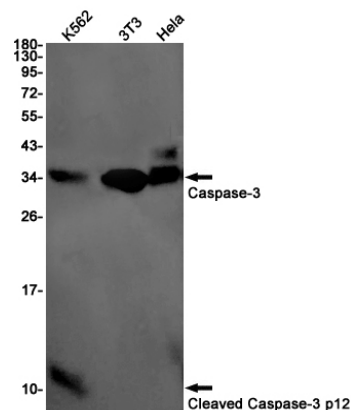
Storage

Store at -20°C. Stable for 12 months from date of receipt.

Clonality

Polyclonal

Ig Type



Western blot detection of Caspase-3 p12 in K562,3T3,HeLa cell lysates using Cleaved-Caspase-3 p12 Rabbit pAb(1:1000 diluted).Predicted band size:32kDa.Observed band size:120/24kDa.