

# SLC25A24 antibody



Catalog Number: 115330

## Product name

SLC25A24 antibody

## Specificity

human, mouse, rat; other species not tested.

## Antibody description

SLC25A24 Rabbit Polyclonal antibody. Positive WB detected in human placenta tissue, HEK-293 cells, mouse heart tissue. Observed molecular weight by Western-blot: 48kd

## Preparation

This antibody was obtained by immunization of SLC25A24 recombinant protein (Accession Number: NM\_013386). Purification method: Antigen affinity purified.

## Formulation

PBS with 0.02% sodium azide and 50% glycerol pH 7.3.

## Storage

Store at -20°C. DO NOT ALIQUOT

## Clonality

Polyclonal

## Ig Type

Rabbit IgG

## Applications

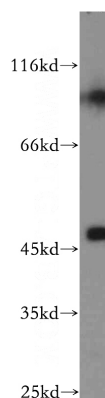
ELISA, WB

## Dilutions

Recommended Dilution:

WB: 1:1000-1:10000

## Validations



human placenta tissue were subjected to SDS PAGE followed by western blot with Catalog No:115330(SLC25A24 antibody) at dilution of 1:1500