

# Anti-PDZD11/PDZK11 antibody



Catalog Number: 103330

## Product name

Anti-PDZD11/PDZK11 antibody

## Immunogen

[Human PDZD11/PDZK11 \(His Tag\) recombinant protein](#)

## Specificity

Human PDZD11 / PDZK11

## Antibody description

Rabbit polyclonal to PDZD11/PDZK11

## Preparation

Produced in rabbits immunized with purified, recombinant Human PDZD11 / PDZK11 (rh PDZD11 / PDZK11; NP\_057568.1; Asp 2-His 140). PDZD11 / PDZK11 specific IgG was purified by Human PDZD11 / PDZK11 affinity chromatography.

## Formulation

0.2 µm filtered solution in PBS with 5% trehalose

## Storage

This antibody can be stored at 2°C-8°C for one month without detectable loss of activity. Antibody products are stable for twelve months from date of receipt when stored at -20°C to -80°C.

Preservative-Free.

Sodium azide is recommended to avoid contamination (final concentration 0.05%-0.1%). It is toxic to cells and should be disposed of properly. Avoid repeated freeze-thaw cycles.

## Clonality

Polyclonal

## Ig Type

Rabbit IgG

## Applications

ELISA, IHC-P

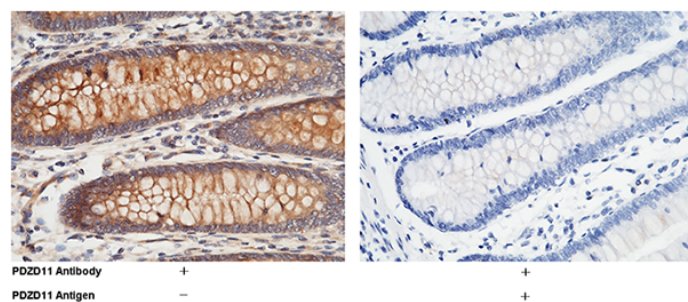
## Dilutions

ELISA: 0.1-0.2 µg/mL

This antibody can be used at 0.1-0.2 µg/mL with the appropriate secondary reagents to detect Human PDZD11. The detection limit for Human PDZD11 is approximately 0.039 ng/well.

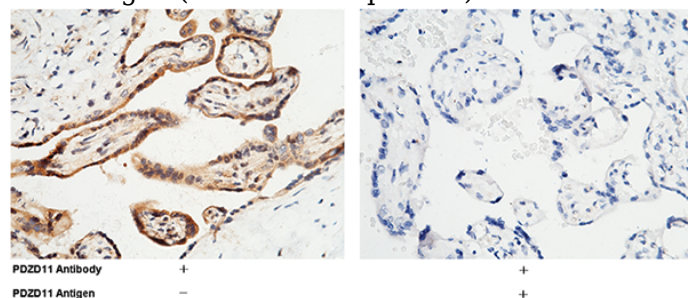
IHC-P: 0.1-1 µg/mL

## Validations



PDZD11 / PDZK11 Antibody, Rabbit PAb, Antigen Affinity Purified, Immunohistochemistry

Immunochemical staining of human PDZD11 in human appendix with rabbit polyclonal antibody (1 µg/mL, formalin-fixed paraffin embedded sections). The left panel: tissue incubated with primary antibody; The right panel: tissue incubated with the mixture of primary antibody and antigen (recombinant protein).



PDZD11 / PDZK11 Antibody, Rabbit PAb, Antigen Affinity Purified, Immunohistochemistry

Immunochemical staining of human PDZD11 in

# Anti-PDZD11/PDZK11 antibody



Catalog Number: 103330

---

human placenta with rabbit polyclonal antibody (1  $\mu\text{g}/\text{mL}$ , formalin-fixed paraffin embedded sections). The left panel: tissue incubated with

primary antibody; The right panel: tissue incubated with the mixture of primary antibody and antigen (recombinant protein).