

# Human ENPEP / Aminopeptidase A (His Tag) recombinant protein



Catalog Number: 502330

## General Information

### Gene Name Synonym

Aminopeptidase A; Differentiation antigen gp160

### Protein Construction

A DNA sequence encoding the human ENPEP (NP\_001968.3) (Arg41-Gly957) was expressed with a polyhistidine tag at the N-terminus.

### Organism

Human

### Expression Host

Baculovirus-Insect Cells

## QC Testing

### Purity

> 90 % as determined by SDS-PAGE

### Endotoxin

< 1.0 EU per  $\mu$ g of the protein as determined by the LAL method

### Stability

Samples are stable for up to twelve months from date of receipt at -70°C

### Predicted N terminal

His

### Molecular Mass

The recombinant human ENPEP consists of 933

amino acids and has a calculated molecular mass of 107.2 kDa. The recombinant protein migrates as an approximately 115.5 kDa band in SDS-PAGE under reducing conditions.

### Formulation

Lyophilized from sterile 20 mM, Tris 500 mM NaCl, 10 % glycerol, pH 7.4.

1. 5 % trehalose and mannitol are added as protectants before lyophilization.
2. Please contact us for any concerns or special requirements.

## Usage Guide

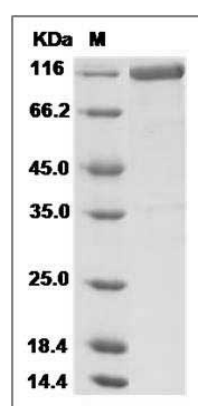
### Storage

Store it under sterile conditions at -20°C to -80°C. It is recommended that the protein be aliquoted for optimal storage. Avoid repeated freeze-thaw cycles.

### Reconstitution

Adding sterile water, prepare a stock solution of 0.25 mg/ml. Concentration is measured by UV-Vis.

### SDS-PAGE



Human ENPEP / Aminopeptidase A Protein (His Tag) SDS-PAGE