

Anti-IGHG1 antibody



Catalog Number: 176630

Product name

Anti-IGHG1 antibody

Specificity

Human

Antibody description

Mouse monoclonal antibody to IGHG1

Preparation

This antigen of this antibody was full length native protein corresponding to human ighg.

Formulation

Liquid, 1*PBS (pH7.4).

Storage

Store at +4°C after thawing. Aliquot store at -20°C. Avoid repeated freeze / thaw cycles.

Clonality

Monoclonal

Ig Type

Mouse IgG

Applications

WB, ELISA

Dilutions

WB: 1:500-1:2,000

ELISA: 1:1,000-1:20,000

Validations

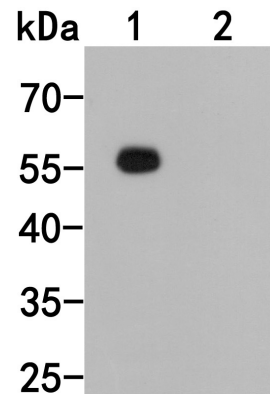


Fig1;; Western blot analysis of Mouse anti-Human IgG on Human IgG protein. Proteins were transferred to a PVDF membrane and blocked with 5% NFTM/TBST in PBS for 1 hour at room temperature. The primary antibody (1ug/ml) was used in 5% NFTM/TBST at room temperature for 2 hours. Goat Anti-Mouse IgG - HRP Secondary Antibody (HA1006) at 1:20,000 dilution was used for 1 hour at room temperature.; Positive control;; Lane 1: Human IgG protein; Lane 2: Human IgM protein; This antibody does not cross-react with the human IgM protein.

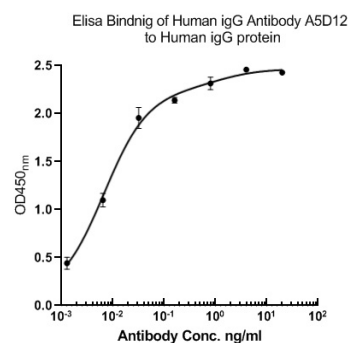


Fig2;; Immobilized Human IgG protein at 1 µg/ml overnight at 4°C. Then blocked with 1% BSA for 1 hour at 37°C, and incubated with the primary antibody for 1 hour at 25°C.