

# LBR Polyclonal Antibody



Catalog Number: 166630

## Product name

LBR Polyclonal Antibody

## Specificity

Human, Mouse, Rat

## Antibody description

Polyclonal antibody to LBR

## Preparation

Antigen: Recombinant fusion protein containing a sequence corresponding to amino acids 1-211 of human LBR (NP\_002287.2).

## Formulation

PBS with 0.02% sodium azide, 50% glycerol, pH7.3.

## Storage

Store at -20°C. Avoid freeze / thaw cycles.

## Clonality

Polyclonal

## Ig Type

Rabbit IgG

## Applications

WB, IHC, IF

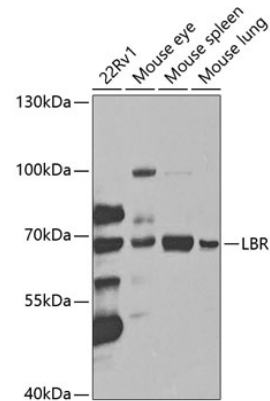
## Dilutions

WB 1:500 - 1:2000

IHC 1:50 - 1:100

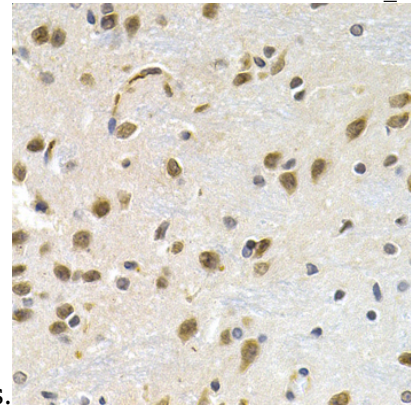
IF 1:50 - 1:100

## Validations



Western blot - LBR Polyclonal Antibody

Western blot analysis of extracts of various cell lines, using LBR antibody at 1:1000 dilution. Secondary antibody: HRP Goat Anti-Rabbit IgG (H+L) at 1:10000 dilution. Lysates/proteins: 25ug per lane. Blocking buffer: 3% nonfat dry milk in TBST. Detection: ECL Enhanced Kit. Exposure



time: 90s.

Immunohistochemistry - LBR Polyclonal Antibody

Immunohistochemistry of paraffin-embedded rat brain using LBR antibody at dilution of 1:200 (40x lens).