

KDM4A Polyclonal Antibody

Catalog Number: 165630

Product name

KDM4A Polyclonal Antibody

Specificity

Human, Mouse

Antibody description

Polyclonal antibody to KDM4A

Preparation

Antigen: Recombinant fusion protein containing a sequence corresponding to amino acids 585-815 of human KDM4A (NP_055478.2).

Formulation

PBS with 0.02% sodium azide, 50% glycerol, pH7.3.

Storage

Store at -20°C. Avoid freeze / thaw cycles.

Clonality

Polyclonal

Ig Type

Rabbit IgG

Applications

WB, IHC, IF, IP

Dilutions

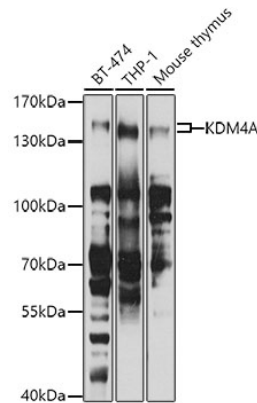
WB 1:500 - 1:2000

IHC 1:50 - 1:200

IF 1:50 - 1:100

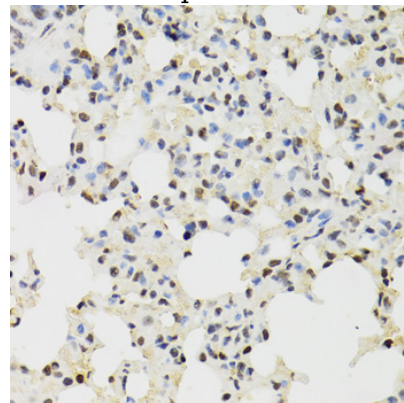
IP 1:50 - 1:100

Validations



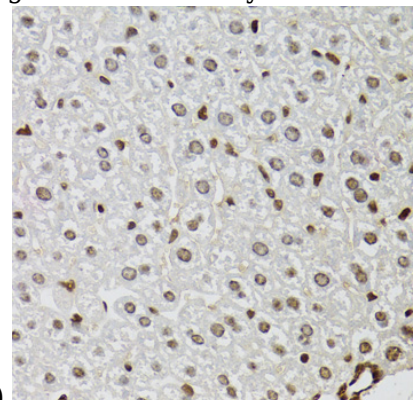
Western blot - KDM4A Polyclonal Antibody

Western blot analysis of extracts of various cell lines, using KDM4A antibody at 1:1000 dilution. Secondary antibody: HRP Goat Anti-Rabbit IgG (H+L) at 1:10000 dilution. Lysates/proteins: 25ug per lane. Blocking buffer: 3% nonfat dry milk in TBST. Detection: ECL Basic Kit. Exposure time: 90s.



Immunohistochemistry - KDM4A Polyclonal Antibody

Immunohistochemistry of paraffin-embedded mouse lung using KDM4A antibody at dilution of



1:100 (40x lens).

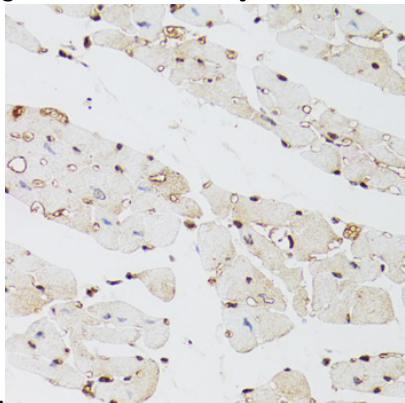
KDM4A Polyclonal Antibody



Catalog Number: 165630

Immunohistochemistry - KDM4A Polyclonal Antibody

Immunohistochemistry of paraffin-embedded mouse liver using KDM4A antibody at dilution of



1:100 (40x lens).

Immunohistochemistry - KDM4A Polyclonal Antibody

Immunohistochemistry of paraffin-embedded mouse heart using KDM4A antibody at dilution of 1:100 (40x lens).