

RFPL1/2/3 antibody



Catalog Number: 114630

Product name

RFPL1/2/3 antibody

Specificity

Human; other species not tested.

Antibody description

RFPL1/2/3 Rabbit Polyclonal antibody. Positive WB detected in HeLa cells, SKOV-3 cells. Observed molecular weight by Western-blot: 35-37 kDa

Preparation

This antibody was obtained by immunization of RFPL1/2/3 recombinant protein (Accession Number: NM_006604). Purification method: Antigen affinity purified.

Formulation

PBS with 0.1% sodium azide and 50% glycerol pH 7.3.

Storage

Store at -20°C. DO NOT ALIQUOT

Clonality

Polyclonal

Ig Type

Rabbit IgG

Applications

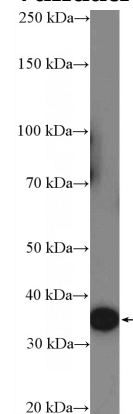
ELISA, WB

Dilutions

Recommended Dilution:

WB: 1:200-1:1000

Validations



HeLa cells were subjected to SDS PAGE followed by western blot with Catalog No:114630(RFPL3 Antibody) at dilution of 1:300