

# MEF2BNB antibody



Catalog Number: 112630

## Product name

MEF2BNB antibody

ELISA, IHC, WB

## Dilutions

Recommended Dilution:

WB: 1:500-1:5000

IHC: 1:10-1:100

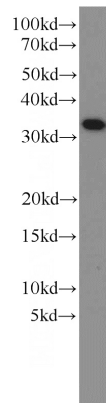
## Specificity

Human, Mouse; other species not tested.

## Antibody description

MEF2BNB Rabbit Polyclonal antibody. Positive IHC detected in human prostate cancer tissue. Positive WB detected in human brain tissue, DU 145 cells, human skeletal muscle tissue, mouse brain tissue. Observed molecular weight by Western-blot: 12-15 kDa, 32 kDa

## Validations



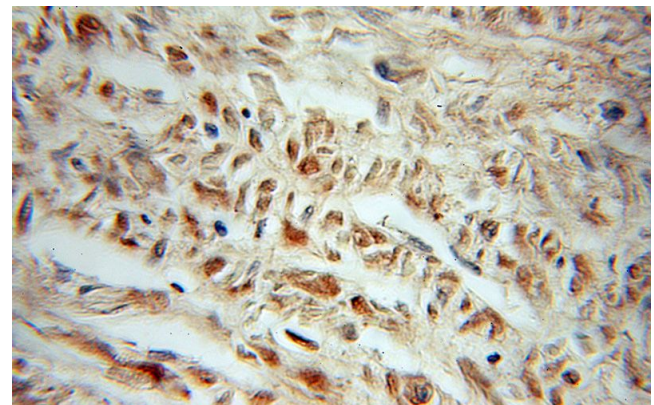
## Preparation

This antibody was obtained by immunization of MEF2BNB recombinant protein (Accession Number: BC010931). Purification method: Antigen affinity purified.

human brain tissue were subjected to SDS PAGE followed by western blot with Catalog No:112630(MEF2BNB antibody) at dilution of 1:1000

## Formulation

PBS with 0.1% sodium azide and 50% glycerol pH 7.3.



## Storage

Store at -20°C. DO NOT ALIQUOT

## Clonality

Polyclonal

## Ig Type

Rabbit IgG

Immunohistochemical of paraffin-embedded human prostate cancer using Catalog No:112630(MEF2BNB antibody) at dilution of 1:10 (under 10x lens)

## Applications