

General Information

Gene Name Synonym

Antigenic surface determinant protein OA3;
Integrin-associated protein; Protein MER6

Protein Construction

A DNA sequence encoding the human CD47 (NP_942088.1) (Met1-Pro139) was expressed with the Fc region of human IgG1 at the C-terminus.

Organism

Human

Expression Host

Human Cells

QC Testing

Activity

1. Measured by its binding ability in a functional ELISA. Immobilized human SIRPA-His (Cat:501315) at 10 µg/ml (100 µl/well) can bind human CD47-Fc, The EC₅₀ of human CD47-Fc is 10.1-23.5 ng/ml.
2. Measured by its binding ability in a functional ELISA. Immobilized mouse SIRPA-His (Cat:502091) at 10 µg/ml (100 µl/well) can bind human CD47-Fc, The EC₅₀ of human CD47-Fc is 0.05-0.13 µg/ml.
3. Measured by its binding ability in a functional ELISA. Immobilized human SIRPG-His (Cat:500317) at 10 µg/ml (100 µl/well) can bind human CD47-Fc, The EC₅₀ of human CD47-Fc is 0.58-1.34 µg/ml.

Purity

> 95 % as determined by SDS-PAGE

Endotoxin

< 1.0 EU per µg of the protein as determined by the LAL method

Stability

Samples are stable for up to twelve months from date of receipt at -70°C

Predicted N terminal

Gln 19

Molecular Mass

The recombinant human CD47/Fc is a disulfide-linked homodimer. The reduced monomer comprises 362 amino acids and has a predicted molecular mass of 40.7 kDa. The apparent molecular mass of the protein is approximately 48-60 kDa in SDS-PAGE under reducing conditions.

Formulation

Lyophilized from sterile PBS, pH 7.4.

1. 5 % trehalose and mannitol are added as protectants before lyophilization.
2. Please contact us for any concerns or special requirements.

Usage Guide

Storage

Store it under sterile conditions at -20°C to -80°C. It is recommended that the protein be aliquoted for optimal storage. Avoid repeated freeze-thaw cycles.

Reconstitution

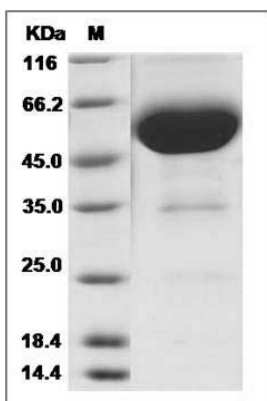
Adding sterile water, prepare a stock solution of 0.25 mg/ml. Concentration is measured by UV-Vis.

SDS-PAGE

Human CD47 (Fc Tag) recombinant protein



Catalog Number: 504230



Human CD47 Protein (Fc Tag) SDS-PAGE