

LIMS1 antibody

Catalog Number: 112230

Product name

LIMS1 antibody

IHC: 1:20-1:200

IF: 1:10-1:100

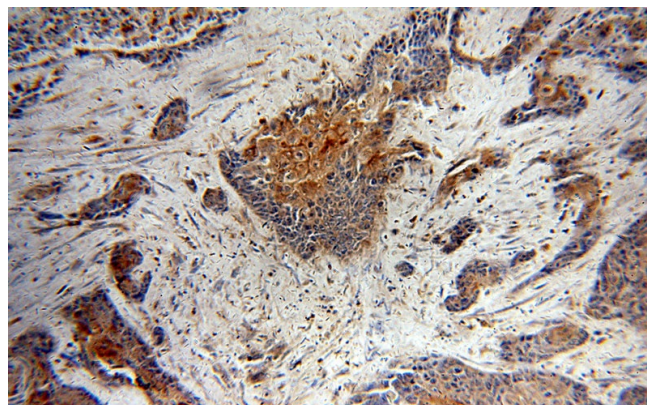
Specificity

Human, Mouse, Rat; other species not tested.

Validations


Antibody description

LIMS1 Rabbit Polyclonal antibody. Positive WB detected in human kidney tissue, mouse lung tissue. Positive IF detected in HeLa cells. Positive IHC detected in human oesophagus cancer tissue. Positive FC detected in HeLa cells. Observed molecular weight by Western-blot: 35-37kd



Preparation

This antibody was obtained by immunization of LIMS1 recombinant protein (Accession Number: NM_001193488). Purification method: Antigen affinity purified.

Immunohistochemical of paraffin-embedded human oesophagus cancer using Catalog No:112230(LIMS1 antibody) at dilution of 1:50 (under 10x lens) 

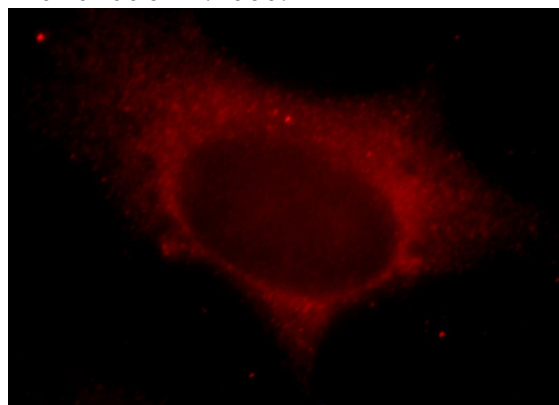
Formulation

PBS with 0.02% sodium azide and 50% glycerol pH 7.3.

1X10⁶ HeLa cells were stained with 0.2ug LIMS1 antibody (Catalog No:112230, red) and control antibody (blue). Fixed with 90% MeOH blocked with 3% BSA (30 min). Alexa Fluor 488-conjugated AffiniPure Goat Anti-Rabbit IgG(H+L) with dilution 1:1000.

Storage

Store at -20°C. DO NOT ALIQUOT



Clonality

Polyclonal

Ig Type

Rabbit IgG

Applications

ELISA, WB, IF, IHC, FC

Immunofluorescent analysis of HeLa cells, using LIMS1 antibody Catalog No:112230 at 1:25 dilution and Rhodamine-labeled goat anti-rabbit

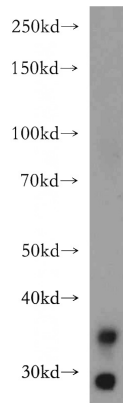
Dilutions

Recommended Dilution:

WB: 1:200-1:2000

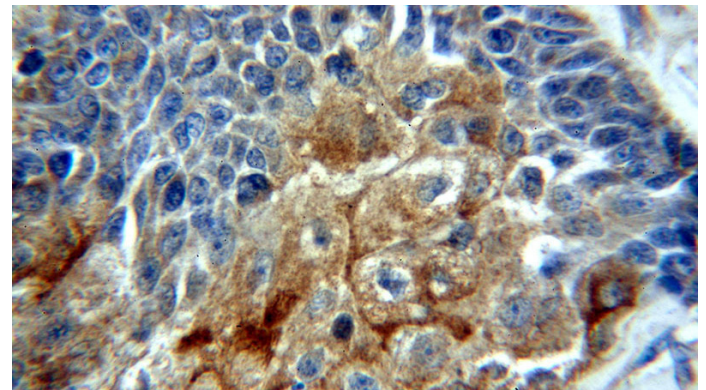
LIMS1 antibody

Catalog Number: 112230



IgG (red).

human kidney tissue were subjected to SDS PAGE followed by western blot with Catalog No:112230(LIMS1 antibody) at dilution of 1:400



Immunohistochemical of paraffin-embedded human oesophagus cancer using Catalog No:112230(LIMS1 antibody) at dilution of 1:50 (under 40x lens)