

Anti-Integrin alpha 5 Rabbit antibody



Catalog Number: 168930

Product name

Anti-Integrin alpha 5 Rabbit antibody

Specificity

Human, Mouse, Rat

Antibody description

Integrin alpha 5 Rabbit monoclonal antibody

Preparation

Antigen: A synthetic peptide of human Integrin alpha 5

Formulation

Supplied in 50nM Tris-Glycine(pH 7.4), 0.15M NaCl, 40%Glycerol, 0.01% sodium azide and 0.05% BSA.

Storage

Store at 4°C short term. Aliquot and store at -20°C long term. Avoid freeze / thaw cycle.

Clonality

Monoclonal

Ig Type

Rabbit IgG

Applications

WB, IHC-P, ICC/IF, FC, IP

Dilutions

1:1000-1:5000

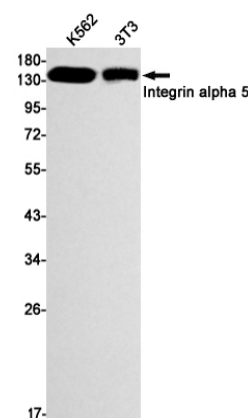
1:50

1:100

1:20-1:100

1:20

Validations



Western blot detection of Integrin alpha 5 in K562,3T3 cell lysates using Integrin alpha 5 Rabbit mAb(1:1000 diluted).Predicted band size:115kDa.Observed band size:150kDa.