

TEFM Polyclonal Antibody



Catalog Number: 165930

Product name

TEFM Polyclonal Antibody

Specificity

Human, Mouse, Rat

Antibody description

Polyclonal antibody to TEFM

Preparation

Antigen: Recombinant fusion protein containing a sequence corresponding to amino acids 36-210 of human TEFM (NP_078959.3).

Formulation

PBS with 0.02% sodium azide, 50% glycerol, pH7.3.

Storage

Store at -20°C. Avoid freeze / thaw cycles.

Clonality

Polyclonal

Ig Type

Rabbit IgG

Applications

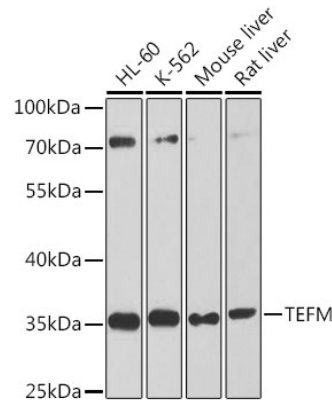
WB, IHC

Dilutions

WB 1:500 - 1:2000

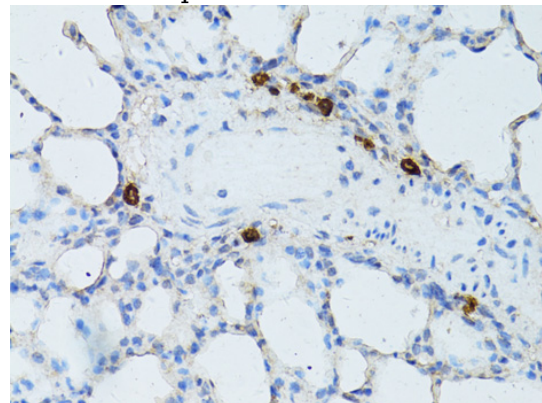
IHC 1:50 - 1:200

Validations



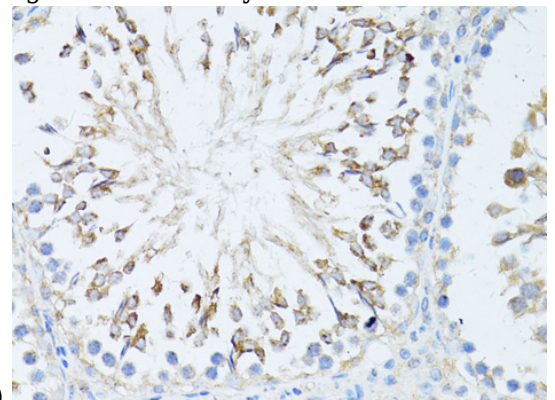
Western blot - TEFM Polyclonal Antibody

Western blot analysis of extracts of various cell lines, using TEFM antibody at 1:1000 dilution. Secondary antibody: HRP Goat Anti-Rabbit IgG (H+L) at 1:10000 dilution. Lysates/proteins: 25ug per lane. Blocking buffer: 3% nonfat dry milk in TBST. Detection: ECL Basic Kit. Exposure time: 90s.



Immunohistochemistry - TEFM Polyclonal Antibody

Immunohistochemistry of paraffin-embedded rat kidney using TEFM antibody at dilution of 1:100



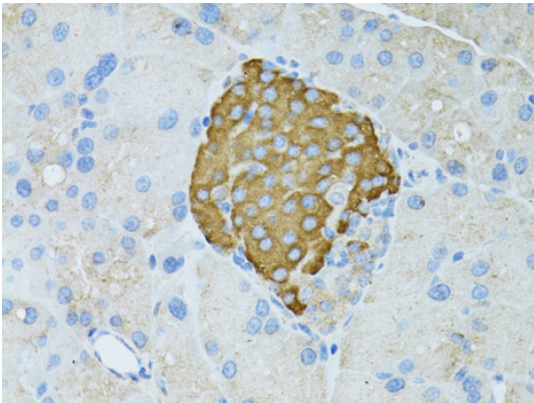
(40x lens).

TEFM Polyclonal Antibody

Catalog Number: 165930

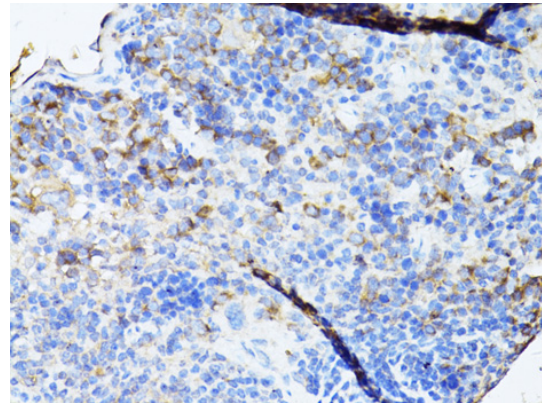
Immunohistochemistry - TEFM Polyclonal Antibody

Immunohistochemistry of paraffin-embedded human prostate using TEFM antibody at dilution of 1:100 (40x lens).



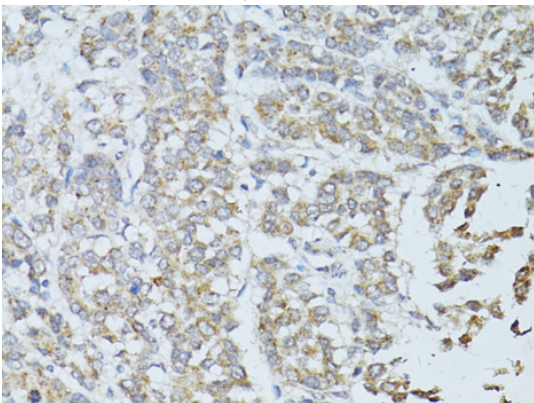
Immunohistochemistry - TEFM Polyclonal Antibody

Immunohistochemistry of paraffin-embedded mouse brain using TEFM antibody at dilution of 1:100 (40x lens).



Immunohistochemistry - TEFM Polyclonal Antibody

Immunohistochemistry of paraffin-embedded human stomach using TEFM antibody at dilution of 1:100 (40x lens).



Immunohistochemistry - TEFM Polyclonal Antibody

Immunohistochemistry of paraffin-embedded rat lung using TEFM antibody at dilution of 1:100 (40x lens).