

# EDA Polyclonal Antibody

Catalog Number: 163930

## Product name

EDA Polyclonal Antibody

## Specificity

Human, Mouse, Rat

## Antibody description

Polyclonal antibody to EDA

## Preparation

Antigen: A synthetic peptide of human EDA

## Formulation

PBS with 0.02% sodium azide, 50% glycerol, pH7.3.

## Storage

Store at -20°C. Avoid freeze / thaw cycles.

## Clonality

Polyclonal

## Ig Type

Rabbit IgG

## Applications

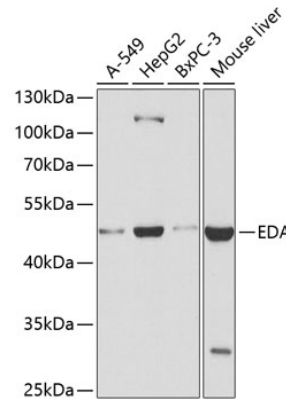
WB, IHC

## Dilutions

WB 1:500 - 1:2000

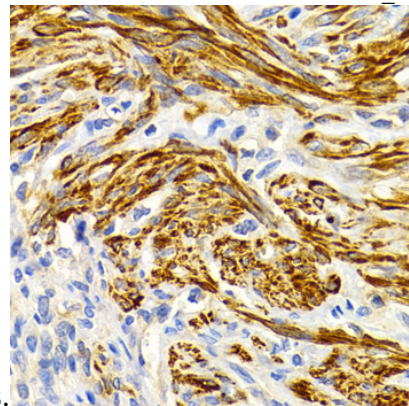
IHC 1:50 - 1:200

## Validations



## Western blot - EDA Polyclonal Antibody

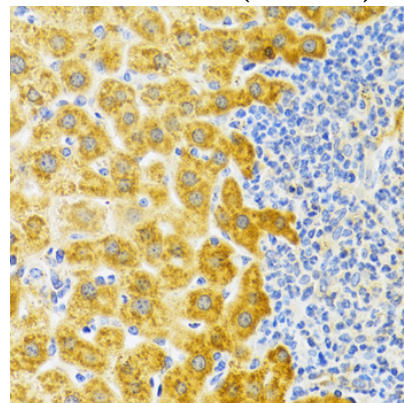
Western blot analysis of extracts of various cell lines, using EDA antibody at 1:400 dilution. Secondary antibody: HRP Goat Anti-Rabbit IgG (H+L) at 1:10000 dilution. Lysates/proteins: 25ug per lane. Blocking buffer: 3% nonfat dry milk in TBST. Detection: ECL Enhanced Kit. Exposure



time: 90s.

## Immunohistochemistry - EDA Polyclonal Antibody

Immunohistochemistry of paraffin-embedded human uterine cancer using EDA Antibody at dilution of 1:200 (40x lens).

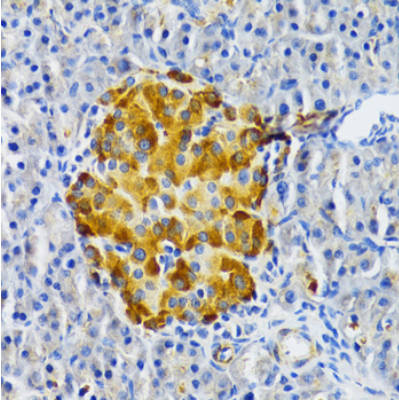


# EDA Polyclonal Antibody

Catalog Number: 163930

Immunohistochemistry - EDA Polyclonal Antibody

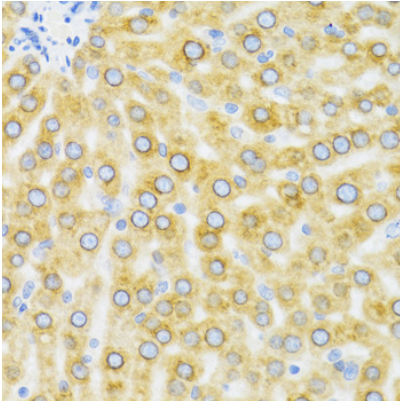
Immunohistochemistry of paraffin-embedded rat liver using EDA Antibody at dilution of 1:100 (40x



lens).

Immunohistochemistry - EDA Polyclonal Antibody

Immunohistochemistry of paraffin-embedded rat pancreas using EDA Antibody at dilution of 1:100

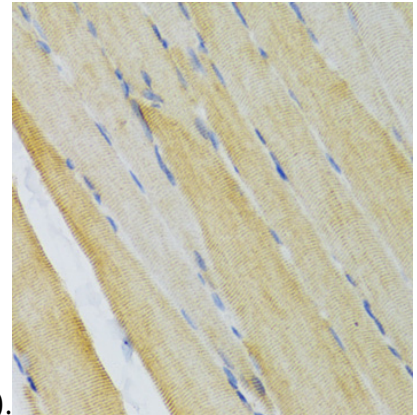


(40x lens).

Immunohistochemistry - EDA Polyclonal Antibody

Immunohistochemistry of paraffin-embedded

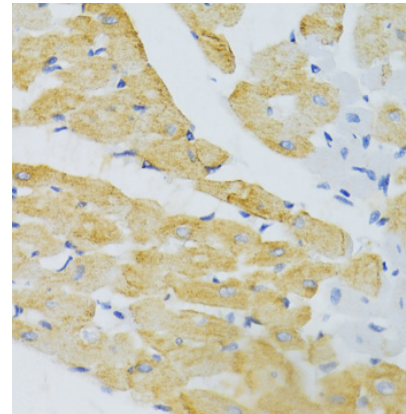
mouse liver using EDA Antibody at dilution of



1:100 (40x lens).

Immunohistochemistry - EDA Polyclonal Antibody

Immunohistochemistry of paraffin-embedded mouse skeletal muscle using EDA Antibody at dilution of 1:100 (40x lens).



Immunohistochemistry - EDA Polyclonal Antibody

Immunohistochemistry of paraffin-embedded mouse heart using EDA Antibody at dilution of 1:100 (40x lens).