

Anti-MSH6 (3E1) Mouse antibody



Catalog Number: 168530

Product name

Anti-MSH6 (3E1) Mouse antibody

IHC: 1/200 - 1/1000

ICC: 1/200 - 1/1000

Specificity

Human

FC: 1/200 - 1/400

ELISA: 1/10000

Antibody description

MSH6 (3E1) Mouse monoclonal antibody

Preparation

Antigen: Purified recombinant fragment of human MSH6 expressed in E. Coli.

Formulation

Ascitic fluid containing 0.03% sodium azide.

Storage

Store at 4°C short term. Store at -20°C long term. Avoid freeze / thaw cycle.

Clonality

Monoclonal

Ig Type

Mouse IgG2a

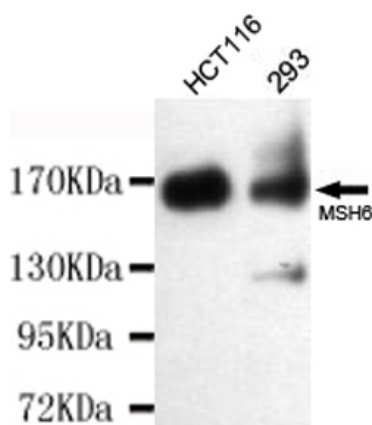
Applications

WB, IHC-P, ICC/IF, FC

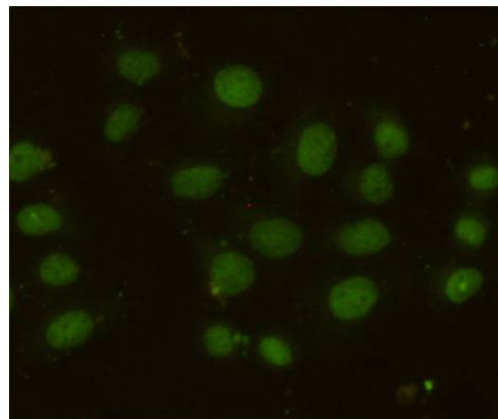
Dilutions

WB: 1/500 - 1/2000

Validations



Western blot detection of MSH6 in 293 and HCT116 cell lysates using MSH6 mouse mAb (1:300-1:500 diluted). Predicted band size: 160KDa. Observed band size: 160KDa.



Immunocytochemistry staining of HeLa cells using MSH6 mouse mAb (dilution 1:100).