

# SETDB1 antibody



Catalog Number: 107530

## Product name

SETDB1 antibody

## Immunogen

[Human SETDB1 Recombinant protein \(His tag\)](#)

## Specificity

Human; other species not tested.

## Antibody description

SETDB1 Mouse Monoclonal antibody. Positive WB detected in human heart tissue, HEK-293 cells. Observed molecular weight by Western-blot: 170-180

## Preparation

This antibody was obtained by immunization of SETDB1 recombinant protein (Accession Number: NM\_001393964). Purification method: Protein G purified.

## Formulation

PBS with 0.02% sodium azide and 50% glycerol pH 7.3.

## Storage

Store at -20°C. DO NOT ALIQUOT

## Clonality

Monoclonal

## Ig Type

Mouse IgG1

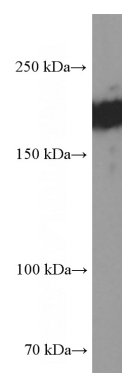
## Applications

ELISA, WB

## Dilutions

Recommended Dilution:  
WB: 1:2000-1:20000

## Validations



human heart tissue were subjected to SDS PAGE followed by western blot with Catalog No:107530(SETDB1 Antibody) at dilution of 1:8000