

SPAG16 antibody



Catalog Number: 115530

Product name

SPAG16 antibody

IP: 1:500-1:5000

IHC: 1:20-1:200

Specificity

Human, Mouse, Rat; other species not tested.

IF: 1:20-1:200

Antibody description

SPAG16 Rabbit Polyclonal antibody. Positive IF detected in HepG2 cells. Positive IHC detected in human brain tissue. Positive IP detected in mouse testis tissue. Positive WB detected in rat testis tissue, mouse testis tissue. Observed molecular weight by Western-blot: 71 kDa

Validations



Preparation

This antibody was obtained by immunization of SPAG16 recombinant protein (Accession Number: NM_001025436). Purification method: Antigen affinity purified.

rat testis tissue were subjected to SDS PAGE followed by western blot with Catalog No:115530(SPAG16 antibody) at dilution of 1:1000

Formulation

PBS with 0.02% sodium azide and 50% glycerol pH 7.3.

Storage

Store at -20°C. DO NOT ALIQUOT

Clonality

Polyclonal

Ig Type

Rabbit IgG

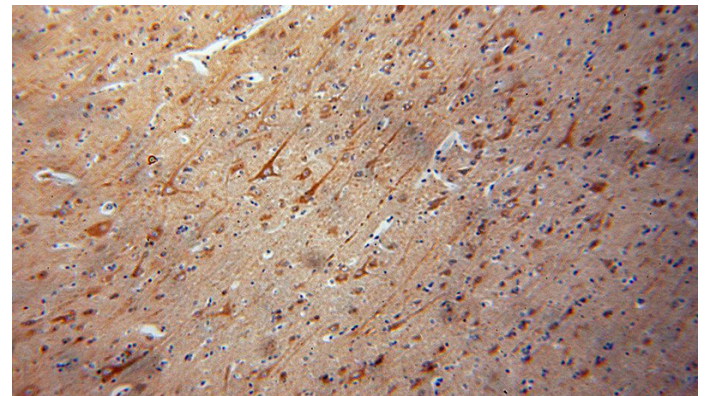
Applications

ELISA, WB, IHC, IF, IP

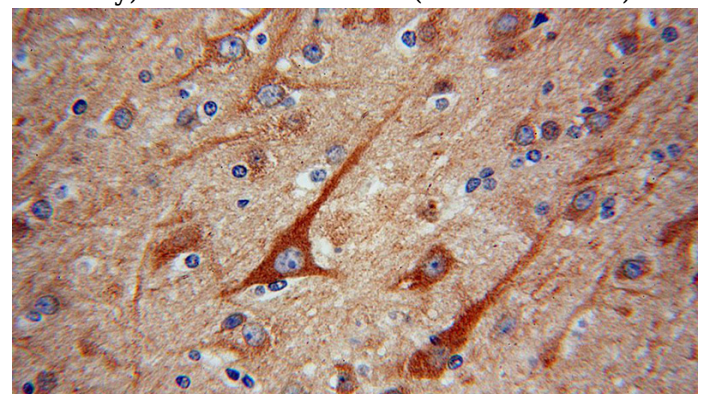
Dilutions

Recommended Dilution:

WB: 1:500-1:5000



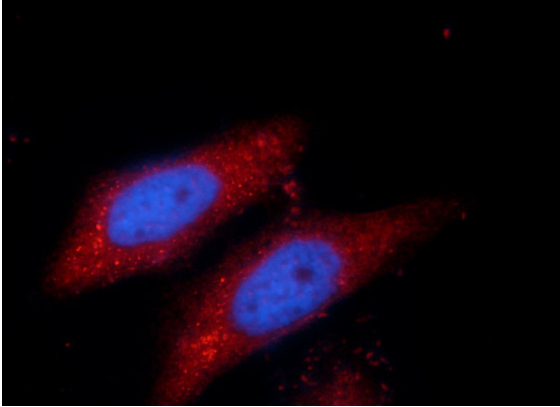
Immunohistochemical of paraffin-embedded human brain using Catalog No:115530(SPAG16 antibody) at dilution of 1:100 (under 10x lens)



SPAG16 antibody

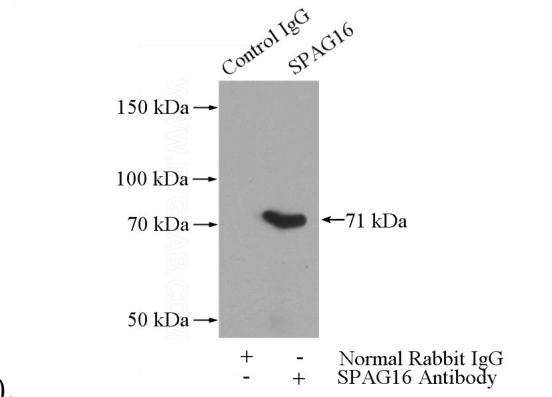
Catalog Number: 115530

Immunohistochemical of paraffin-embedded human brain using Catalog No:115530(SPAG16 antibody) at dilution of 1:100 (under 40x lens)



Immunofluorescent analysis of HepG2 cells, using SPAG16 antibody Catalog No:115530 at 1:50

dilution and Rhodamine-labeled goat anti-rabbit IgG (red). Blue pseudocolor = DAPI (fluorescent



DNA dye).

IP Result of anti-SPAG16 (IP:Catalog No:115530, 4ug; Detection:Catalog No:115530 1:1000) with mouse testis tissue lysate 4000ug.