

Human EphB6/Eph Receptor B6 recombinant protein



Catalog Number: 504530

General Information

Protein Construction

The mature form of human EphB6 (NP_004436.1) extracellular domain (Met 1-Ser 579) with quinary-aa peptide (DDDDK) at the C-terminus was expressed and purified.

Organism

Human

Expression Host

Human Cells

QC Testing

Activity

Measured by its binding ability in a functional ELISA.

Immobilized human EphB6 (Cat:504530) at 10 µg/mL (100 µl/well) can bind biotinylated human EFNB2-Fch (Cat:502066) with a linear range of 1.56-50 ng/mL.

Purity

> 95 % as determined by SDS-PAGE and SEC-HPLC Analysis.

Endotoxin

< 1.0 EU per µg of the protein as determined by the LAL method

Stability

Samples are stable for up to twelve months from date of receipt at -70°C

Predicted N terminal

Leu 17

Molecular Mass

The recombinant mature human EphB6 consists of 569 amino acids and has a calculated molecular mass of 60.4 kDa. In SDS-PAGE under reducing conditions, the apparent molecular mass of rhEphB6 is approximately 72 kDa due to glycosylation.

Formulation

Lyophilized from sterile 100mM NaCl, 50mM Tris, pH 7.5

1. 5 % trehalose and mannitol are added as protectants before lyophilization.

2. Please contact us for any concerns or special requirements.

Usage Guide

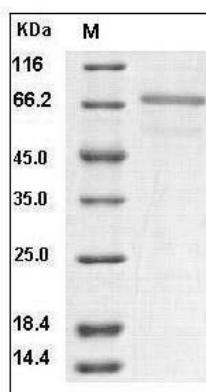
Storage

Store it under sterile conditions at -20°C to -80°C. It is recommended that the protein be aliquoted for optimal storage. Avoid repeated freeze-thaw cycles.

Reconstitution

Adding sterile water, prepare a stock solution of 0.25 mg/ml. Concentration is measured by UV-Vis.

SDS-PAGE



Human EphB6 / EphB6 Protein SDS-PAGE