

Anti-14-3-3 (pan) Rabbit antibody



Catalog Number: 167130

Product name

Anti-14-3-3 (pan) Rabbit antibody

Specificity

Human, Mouse, Rat

Antibody description

14-3-3 (pan) Rabbit polyclonal antibody

Preparation

Antigen: Synthetic peptide.

Formulation

Purified Rabbit polyclonal antibody in PBS(pH 7.4) containing with 0.03% Proclin300 and 50% glycerol.

Storage

Store at 4°C short term. Store at -20°C long term.
Avoid freeze / thaw cycle.

Clonality

Polyclonal

Ig Type

Rabbit IgG

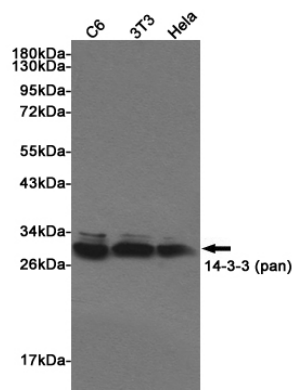
Applications

WB

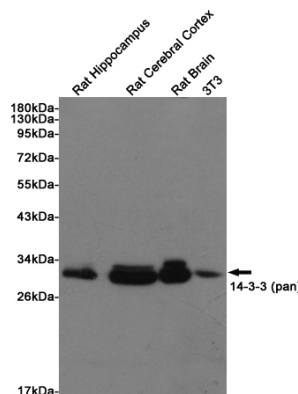
Dilutions

WB: 1/500

Validations



Western blot detection of 14-3-3 (pan) in C6, 3T3 and HeLa cell lysates using 14-3-3 (pan) Rabbit pAb (1:500 diluted). Predicted band size: 27~29KDa. Observed band size:27~29KDa.



Western blot detection of 14-3-3 (pan) in Rat Hippocampus, Rat Cerebral Cortex and Rat Brain lysates using 14-3-3 (pan) Rabbit pAb (1:500 diluted). Predicted band size: 27~29KDa. Observed band size:27~29KDa.