

# SETDB1 antibody

Catalog Number: 115130

## Product name

SETDB1 antibody

IP: 1:500-1:5000

IHC: 1:20-1:200

## Specificity

Human, Mouse, Rat; other species not tested.

## Antibody description

SETDB1 Rabbit Polyclonal antibody. Positive WB detected in MCF7 cells, HEK-293 cells, human testis tissue, Jurkat cells, mouse brain tissue, PC-3 cells. Positive IP detected in MCF-7 cells. Positive IHC detected in human testis tissue. Observed molecular weight by Western-blot: 170 kDa

## Preparation

This antibody was obtained by immunization of SETDB1 recombinant protein (Accession Number: NM\_001393964). Purification method: Antigen affinity purified.

## Formulation

PBS with 0.1% sodium azide and 50% glycerol pH 7.3.

## Storage

Store at -20°C. DO NOT ALIQUOT

## Clonality

Polyclonal

## Ig Type

Rabbit IgG

## Applications

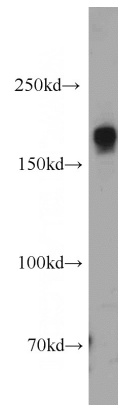
ELISA, WB, IHC, IP

## Dilutions

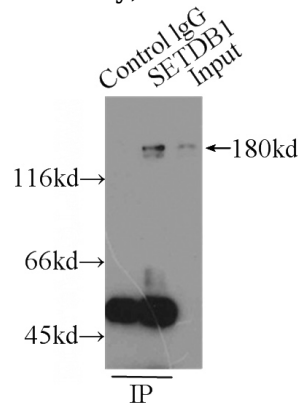
Recommended Dilution:

WB: 1:500-1:5000

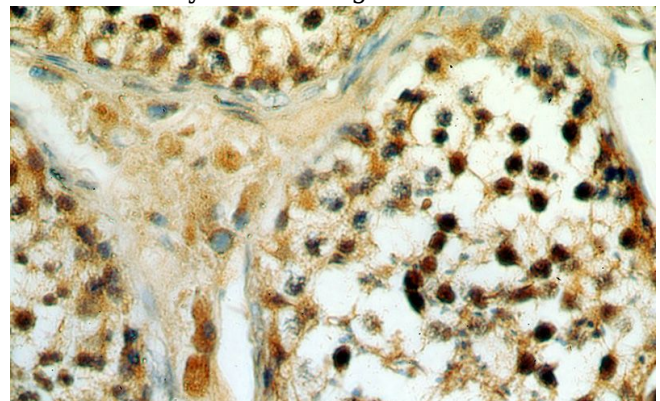
## Validations



MCF7 cells were subjected to SDS PAGE followed by western blot with Catalog No:115130(SETDB1 antibody) at dilution of 1:1000



IP Result of anti-SETDB1 (IP:Catalog No:115130, 3ug; Detection:Catalog No:115130 1:1000) with MCF-7 cells lysate 2500ug.



Immunohistochemical of paraffin-embedded human testis using Catalog No:115130(SETDB1

# SETDB1 antibody



Catalog Number: 115130

---

antibody) at dilution of 1:50 (under 40x lens)