

# Anti-Carboxypeptidase A2/CPA2 antibody



Catalog Number: 105130

## Product name

Anti-Carboxypeptidase A2/CPA2 antibody

## Immunogen

[Rat Carboxypeptidase A2/CPA2 \(His Tag\) recombinant protein](#)

## Specificity

Rat Carboxypeptidase A2 / CPA2

## Antibody description

Rabbit polyclonal to Carboxypeptidase A2/CPA2

## Preparation

Produced in rabbits immunized with purified, recombinant Rat Carboxypeptidase A2 / CPA2 (rR Carboxypeptidase A2 / CPA2; NP\_001013101.2; Met1-Tyr417). Carboxypeptidase A2 / CPA2 specific IgG was purified by Rat Carboxypeptidase A2 / CPA2 affinity chromatography.

## Formulation

0.2 µm filtered solution in PBS

## Storage

This antibody can be stored at 2°C-8°C for one month without detectable loss of activity. Antibody products are stable for twelve months from date of receipt when stored at -20°C to -80°C.

Preservative-Free.

Sodium azide is recommended to avoid contamination (final concentration 0.05%-0.1%). It

is toxic to cells and should be disposed of properly. Avoid repeated freeze-thaw cycles.

## Clonality

Polyclonal

## Ig Type

Rabbit IgG

## Applications

ELISA, WB

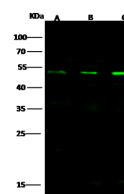
## Dilutions

WB: 5-20 µg/ml

ELISA: 0.1-0.2 µg/ml

This antibody can be used at 0.1-0.2 µg/ml with the appropriate secondary reagents to detect Rat Carboxypeptidase A2 / CPA2.

## Validations



Items	Lanes	A	B	C
Sample (whole cell lysate)		HepG2	Jurkat	HEK293
Sample Volume (µg/lane)		30	30	30
Gel	13% SDS-PAGE reducing gel			
Recommended Concentration	5-20 µg/ml			
Secondary Antibody	Dylight 800-labeled Antibody to Rabbit IgG (H+L), at 1:5000 dilution.			
	Developed using Odyssey imaging system.			
Explanation	Predicted band size : 47 kDa Observed band size : 50 kDa			

Carboxypeptidase A2 / CPA2 Antibody, Rabbit PAb, Antigen Affinity Purified, Western blot