

GPR50 antibody

Catalog Number: 111130

Product name

GPR50 antibody

Specificity

Human, Mouse; other species not tested.

Antibody description

GPR50 Rabbit Polyclonal antibody. Positive FC detected in K-562 cells. Positive IHC detected in mouse brain tissue. Positive IF detected in mouse brain tissue, SH-SY5Y cells. Positive WB detected in HEK-293 cells. Observed molecular weight by Western-blot: 67 kDa

Preparation

This antibody was obtained by immunization of Peptide (Accession Number: NM_004224). Purification method: Antigen affinity purified.

Formulation

PBS with 0.1% sodium azide and 50% glycerol pH 7.3.

Storage

Store at -20°C. DO NOT ALIQUOT

Clonality

Polyclonal

Ig Type

Rabbit IgG

Applications

ELISA, IF, WB, IHC, FC

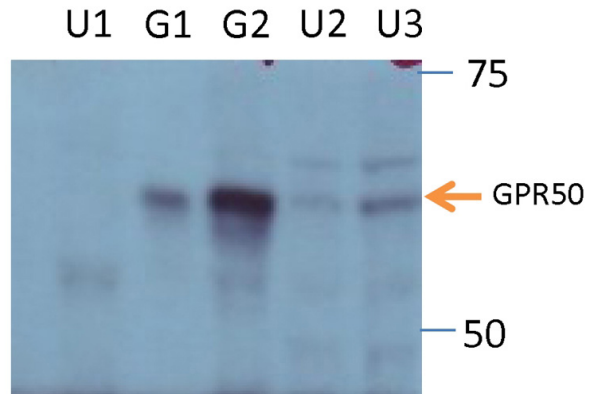
Dilutions

Recommended Dilution:

WB: N/AIHC: 1:20-1:200

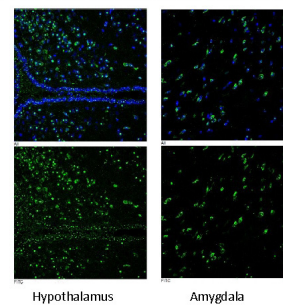
IF: 1:10-1:100

Validations



WB result of anti-GPR50 (Catalog No:111130, 1:2000) by Dr. Qian Li, University of Edinburgh. U1: SH-SY5Y cells, untransfected, 10ug; G1: HEK293 cells, with transfected GPR50, 1ug; G2: HEK293 cells, with transfected GPR50, 10ug; U2: HEK293 cells, untransfected, with endogenous GPR50, 10ug; U3: HEK293 cells, untransfected, with endogenous GPR50, 20ug.

Immunohistochemistry



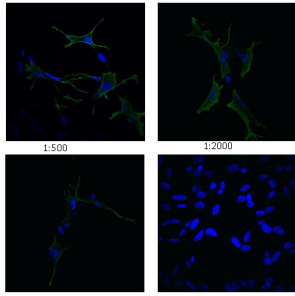
Sample: C57 Bl/6 mouse, adult
Optimal dilution: 1 in 50
3v: the third ventricle

IF result of anti-GPR50 (Catalog No:111130, 1:50) with mouse brain tissue slide by Dr. Qian Li, University of Edinburgh.

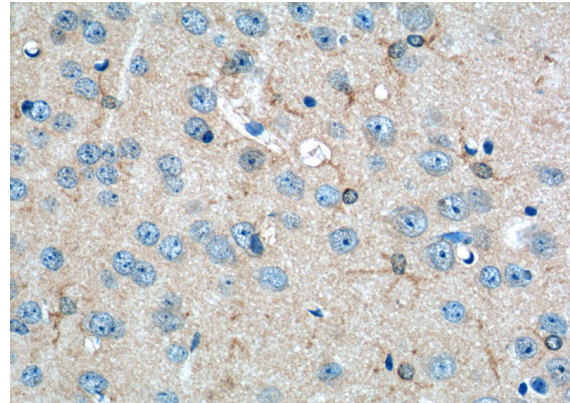
GPR50 antibody

Catalog Number: 111130

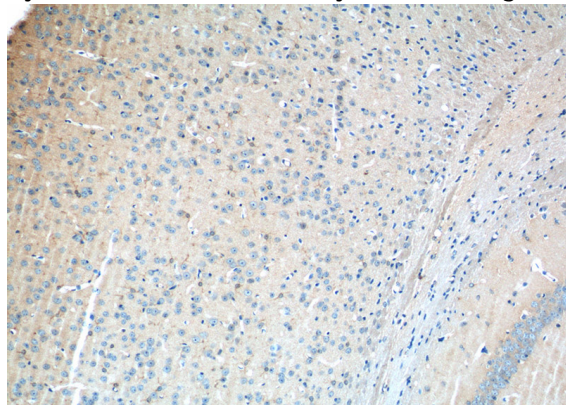
Immunocytochemistry



Sample: SH-SY5Y cells, GPR50 transfected
optimal dilution: 1 in 500

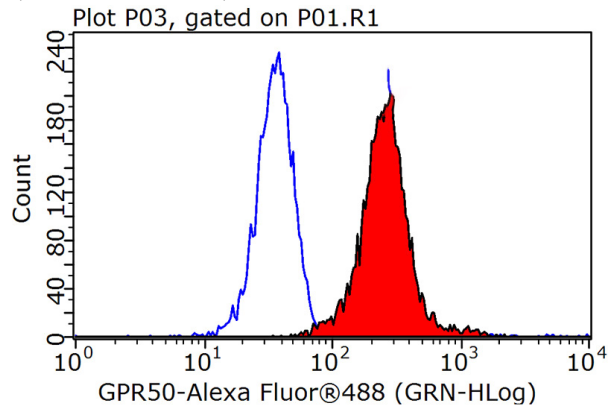


IF result of anti-GPR50 (Catalog No:111130, 1:500) with SH-SY5Y cells transfected with GPR50 by Dr. Qian Li, University of Edinburgh.



Immunohistochemistry of paraffin-embedded mouse brain tissue slide using Catalog No:111130(GPR50 Antibody) at dilution of 1:50 (under 10x lens)

Immunohistochemistry of paraffin-embedded mouse brain tissue slide using Catalog No:111130(GPR50 Antibody) at dilution of 1:50 (under 40x lens)



1X10⁶ K-562 cells were stained with 0.2ug GPR50 antibody (Catalog No:111130, red) and control antibody (blue). Fixed with 90% MeOH blocked with 3% BSA (30 min). Alexa Fluor 488-conjugated AffiniPure Goat Anti-Rabbit IgG(H+L) with dilution 1:1000.