

# Calmodulin antibody

Catalog Number: 108830

## Product name

Calmodulin antibody

## Specificity

Human, Mouse; other species not tested.

## Antibody description

Calmodulin Rabbit Polyclonal antibody. Positive IHC detected in human hepatocirrhosis tissue. Positive WB detected in mouse skeletal muscle tissue. Observed molecular weight by Western-blot: 17 kDa

## Preparation

This antibody was obtained by immunization of Calmodulin recombinant protein (Accession Number: NM\_001329922). Purification method: Antigen affinity purified.

## Formulation

PBS with 0.1% sodium azide and 50% glycerol pH 7.3.

## Storage

Store at -20°C. DO NOT ALIQUOT

## Clonality

Polyclonal

## Ig Type

Rabbit IgG

## Applications

ELISA, IHC, WB

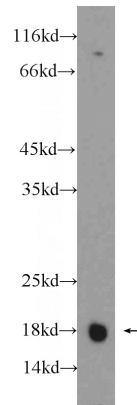
## Dilutions

Recommended Dilution:

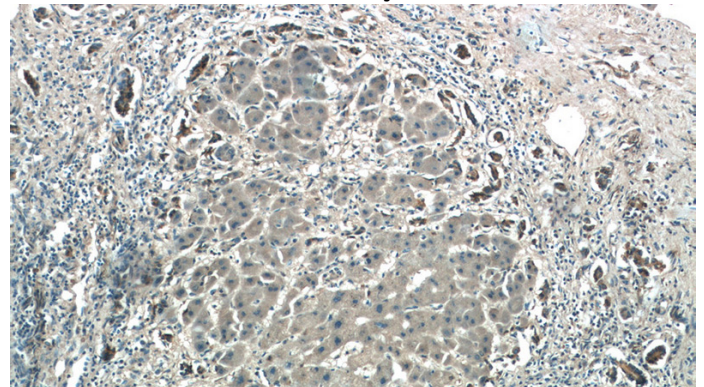
WB: 1:200-1:1000

IHC: 1:20-1:200

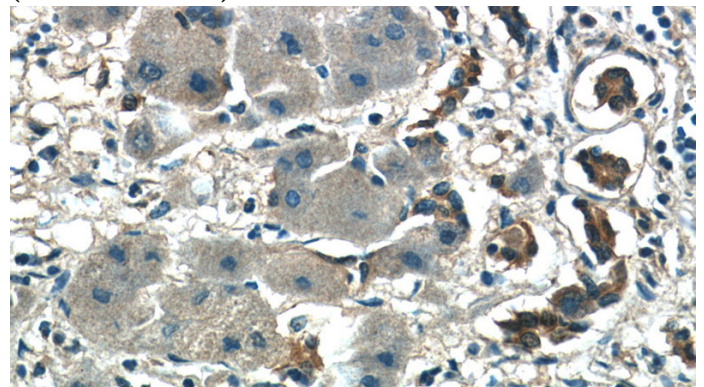
## Validations



mouse skeletal muscle tissue were subjected to SDS PAGE followed by western blot with Catalog No:108830(CALM2 Antibody) at dilution of 1:300



Immunohistochemistry of paraffin-embedded human hepatocirrhosis tissue slide using Catalog No:108830(CALM2 Antibody) at dilution of 1:50 (under 10x lens)



Immunohistochemistry of paraffin-embedded human hepatocirrhosis tissue slide using Catalog No:108830(CALM2 Antibody) at dilution of 1:50

# Calmodulin antibody



Catalog Number: 108830

---

(under 40x lens)