

SULT1E1 antibody

Catalog Number: 115830

Product name

SULT1E1 antibody

Specificity

Human, Mouse, Rat; other species not tested.

Antibody description

SULT1E1 Rabbit Polyclonal antibody. Positive IP detected in mouse liver tissue. Positive WB detected in human lung tissue, human adrenal gland tissue, human kidney tissue, human liver tissue, mouse kidney tissue. Observed molecular weight by Western-blot: 32-35 kDa

Preparation

This antibody was obtained by immunization of SULT1E1 recombinant protein (Accession Number: XM_047416101). Purification method: Antigen affinity purified.

Formulation

PBS with 0.1% sodium azide and 50% glycerol pH 7.3.

Storage

Store at -20°C. DO NOT ALIQUOT

Clonality

Polyclonal

Ig Type

Rabbit IgG

Applications

ELISA, WB, IP

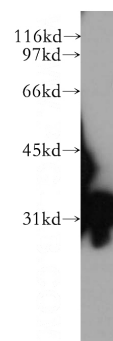
Dilutions

Recommended Dilution:

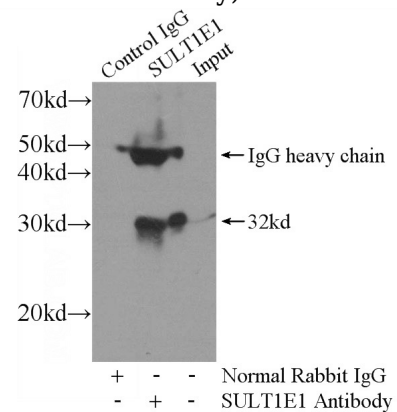
WB: 1:200-1:2000

IP: 1:200-1:1000

Validations



human lung tissue were subjected to SDS PAGE followed by western blot with Catalog No:115830(SULT1E1 antibody) at dilution of



1:500

IP Result of anti-SULT1E1 (IP:Catalog No:115830, 4ug; Detection:Catalog No:115830 1:400) with mouse liver tissue lysate 4000ug.