

phospho-RCC1(Ser12) antibody



Catalog Number: 113830

Product name

phospho-RCC1(Ser12) antibody

Specificity

Human, Mouse, Rat; other species not tested.

Antibody description

phospho-RCC1(Ser12) Rabbit Polyclonal antibody. Positive WB detected in HeLa cells, HEK-293 cells, HepG2 cells. Positive IHC detected in human ovary tumor tissue. Observed molecular weight by Western-blot: 45-50kd

Preparation

This antibody was obtained by immunization of Peptide (Accession Number: NM_001048194). Purification method: Antigen affinity purified.

Formulation

PBS with 0.02% sodium azide and 50% glycerol pH 7.3.

Storage

Store at -20°C. DO NOT ALIQUOT

Clonality

Polyclonal

Ig Type

Rabbit IgG

Applications

ELISA, WB, IHC

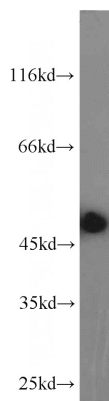
Dilutions

Recommended Dilution:

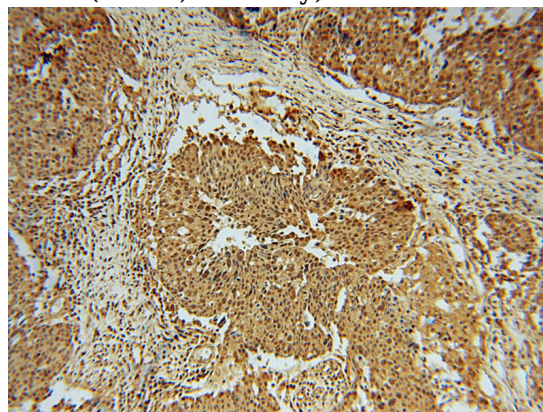
WB: 1:200-1:2000

IHC: 1:20-1:200

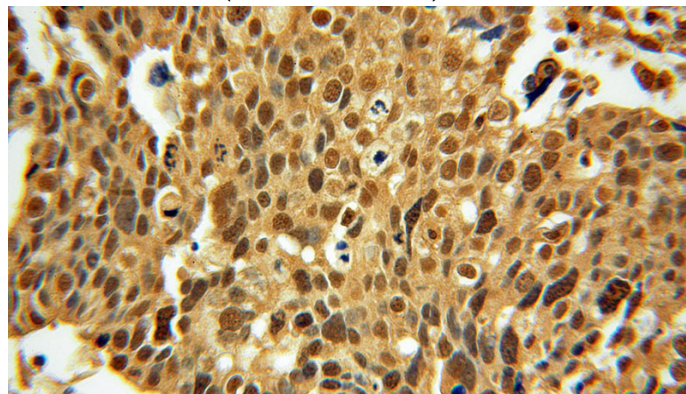
Validations



HeLa cells were subjected to SDS PAGE followed by western blot with Catalog No:113830(phospho-CHC1(Ser12) antibody) at dilution of 1:300



Immunohistochemical of paraffin-embedded human ovary tumor using Catalog No:113830(phospho-CHC1(Ser12) antibody) at dilution of 1:50 (under 10x lens)



Immunohistochemical of paraffin-embedded human ovary tumor using Catalog No:113830(phospho-CHC1(Ser12) antibody) at dilution of 1:50 (under 40x lens)