

# MRPL46 antibody



Catalog Number: 112830

## Product name

MRPL46 antibody

## Specificity

human, mouse, rat; other species not tested.

## Antibody description

MRPL46 Rabbit Polyclonal antibody. Positive IHC detected in human heart. Positive WB detected in human heart tissue, human testis tissue. Observed molecular weight by Western-blot: 32kd

## Preparation

This antibody was obtained by immunization of MRPL46 recombinant protein (Accession Number: NM\_022163). Purification method: Antigen affinity purified.

## Formulation

PBS with 0.02% sodium azide and 50% glycerol pH 7.3.

## Storage

Store at -20°C. DO NOT ALIQUOT

## Clonality

Polyclonal

## Ig Type

Rabbit IgG

## Applications

ELISA, WB, IHC

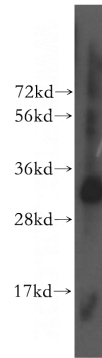
## Dilutions

Recommended Dilution:

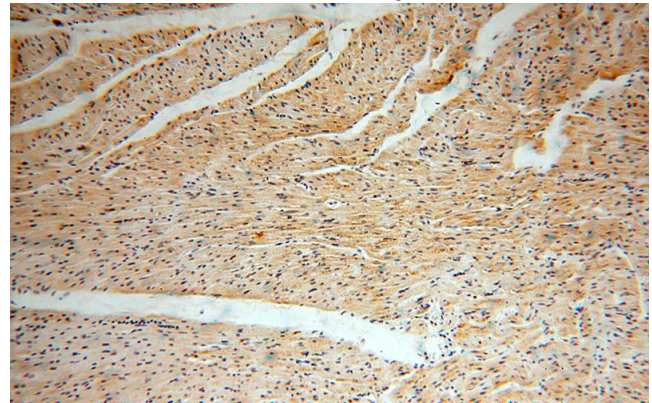
WB: 1:500-1:5000

IHC: 1:20-1:200

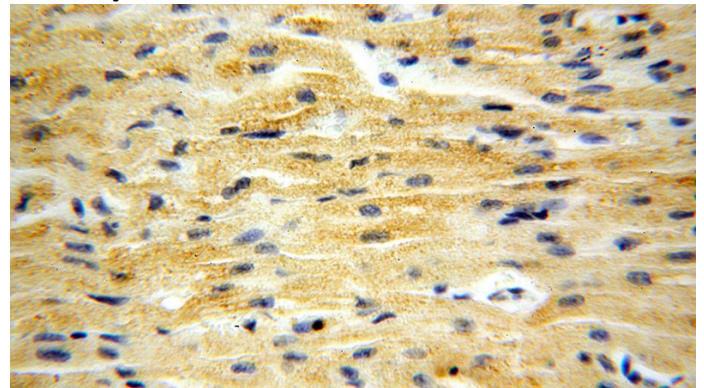
## Validations



human heart tissue were subjected to SDS PAGE followed by western blot with Catalog No:112830(MRPL46 antibody) at dilution of 1:300



Immunohistochemical of paraffin-embedded human heart using Catalog No:112830(MRPL46 antibody) at dilution of 1:50 (under 10x lens)



Immunohistochemical of paraffin-embedded human heart using Catalog No:112830(MRPL46 antibody) at dilution of 1:50 (under 40x lens)