

Anti-IL-1 beta antibody

Catalog Number: 100830

Product name

Anti-IL-1 beta antibody

Immunogen

[Canine IL-1 beta recombinant protein](#)

Specificity

Canine IL-1 beta

Antibody description

Rabbit polyclonal to IL-1 beta

Preparation

Produced in rabbits immunized with purified, recombinant Canine IL-1 beta (rh IL-1 beta; Q28292; Ala115-Ser266). IL-1 beta specific IgG was purified by Canine IL-1 beta affinity chromatography.

Formulation

0.2 µm filtered solution in PBS

Storage

This antibody can be stored at 2°C-8°C for one month without detectable loss of activity. Antibody products are stable for twelve months from date of receipt when stored at -20°C to -80°C.

Preservative-Free.

Sodium azide is recommended to avoid contamination (final concentration 0.05%-0.1%). It is toxic to cells and should be disposed of properly. Avoid repeated freeze-thaw cycles.

Clonality

Polyclonal

Ig Type

Rabbit IgG

Applications

ELISA, WB

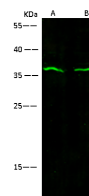
Dilutions

WB: 10-15 µg/ml

ELISA:0.1-0.2 µg/mL

This antibody can be used at 0.1-0.2 µg/mL with the appropriate secondary reagents to detect Canine IL-1 beta. The detection limit for Canine IL-1 beta is < 0.039 ng/well.

Validations



Lanes	A	B
Item		
Sample [with/without lysate]	Jurkat	293T
Sample Volume (µg/lane)	30	30
Gel	13%SDS-PAGE reducing gel	
Recommended Concentration	10-15µg/ml	
Secondary Antibody	Dylight 800 labeled Antibody to Rabbit IgG (H+L), at 1:5000 dilution.	
Developed using Odyssey imaging system.		
Explanation	Predicted band size : 30 kDa Observed band size : 36 kDa	

IL-1 beta Antibody, Rabbit PAb, Antigen Affinity Purified, Western blot